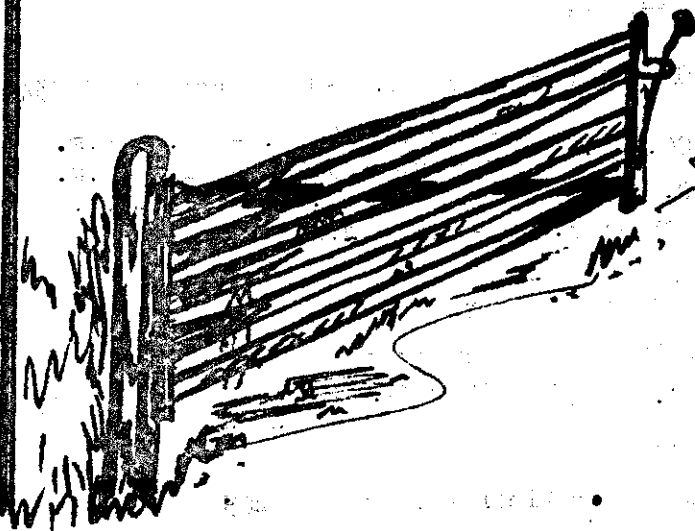


April 1980



OUT OF REACH

PUBLIC
FOOTPATH



COUNTY COUNCILLOR: Geoffrey Woollard
Chalk Farm, Bottisham Tel: Cambridge 811209

DISTRICT COUNCILLOR: Mrs. Margaret Cook,
Ash Cottage, Commercial End,
Swaffham Bulbeck, CB5 0NF Tel: Cambridge 811335

PARISH COUNCILLORS: Albert Johnson (Chairman) Tel: Newmarket 741437
Snake Hall Farm, 50 Swaffham Road, Reach.
Roy Folkes
Harvey Harrison
Joyce Harrison

CLERK TO THE PARISH COUNCIL: Mrs M. Evans
23 Great Lane, Reach Tel: Newmarket 742232

VILLAGE CENTRE COMMITTEE MEMBERS: Harvey Harrison (Chairman)
Tilden House, Reach Tel: Newmarket 741150

Ray Folkes (Caretaker) Tel: 741414	Rodney Housden
Judith Neaves (Secretary)	Albert & Gwen Johnson
Anita Folkes (Treasurer)	Wendy Cole
Bill & Jean Estell	John Robinson
Joyce Harrison	Bill Pedley
Nicholas Hellowell (Co-opted)	Bob & Emily Smith
	Derek Badcock

'OUT OF REACH' COMMITTEE MEMBERS:

Margaret Cook	Albert Johnson
Roy Folkes	Jenny Johnson (Co-Editor) Tel: 741854
Harvey Harrison (Business Manager)	Jenny Moseley
Joyce Harrison (Distribution)	Kay Pote (Co-Editor) Tel: 742011
Alison Housden	Bob Smith (Compiler)
Rodney Housden	Geoffrey Woollard

STENCILS TYPED BY: Joyce Blocksage, Jenny Fowle, Pat Harrison and Margaret Smith

DOCTORS SCOTT AND RIDSDILL-SMITH, Harlech House, Burwell, Tel: Newmarket 741234

Surgery Hours: Monday	} 9.00. - 11.00.a.m.	Wednesday	9.00. - 10.00.a.m.
Tuesday		Thursday	9.00. - 11.00.a.m.
Friday		2.00. - 5.00.p.m.	
Saturday: Emergencies only: 9.00. - 10.00.a.m.			

Ante-Natal Clinics: 1st and 3rd Tuesday in the month
2.00 - 3.30.p.m. at the Surgery

Child Welfare Clinic: 1st, 2nd and 4th Tuesday in the month
2.00. - 4.00.p.m. at Gardiner Memorial Hall.

VICAR: Rev. Canon J. K. Byrom, Swaffham Prior Vicarage. Tel: 741409

"OUT OF REACH"

COMMUNITY MAGAZINE

Issue No. 43

April 1980

EDITORIAL

I wonder how many of you recall that in the November Issue of the magazine the Vicar, in his article, mentioned that the poet, Edwin Muir, was buried in Swaffham Prior cemetery. I must confess that until then I did not know that he had lived in the village. Although it was only for three years, it was nevertheless the place in which a wide-travelled man of letters chose to end his days. I am aware that many of you may not have heard of him, and also that it is probably unfashionable to like poetry these days; but as far as I know, he is the only famous person who has lived in this particular area, so I felt that I shouldn't let the opportunity pass to do some research into his life and work. I hope that nobody will mind that it was not Reach, but Swaffham Prior, that he was connected with but we are such close neighbours! And I hope that maybe it will spark off some interest in one or two literary minds!

I am delighted to be able to inform you that our 'Knit-In' proved a tremendous success. We do not yet have the final total of the money made; this will be published in next month's issue. We think that the figure is approximately £141.00, which is, I am sure you will agree, a staggering amount! It will enable us to pay off our debt and leave some money in the "kitty" too. Fourteen ladies and Albert Johnson turned up, and the Newmarket Journal and the Cambridge Evening News sent along photographers. I would like to say a special "thank you" to Debbie Garner, a reporter from the Newmarket Journal, who raised the enormous sum of over £40.00 from her colleagues. We are most grateful to her for coming along and joining us, and to her generous sponsors. I would also like to mention that 14 people gave donations instead of joining the 'Knit-In! Thank you to them and to everyone who sponsored the event. Lastly, thank you to all who baked cakes or biscuits. The cake stall alone raised over £15.00

I would like to welcome the Jordan family to the village, who recently moved into Hobbyke's End. It is good to see Mrs. Phil Webb out and about again after being unwell for so long. It is also good to see Joyce Harrison again after her recent spell in hospital. She wishes me to pass on thanks to all the people who sent her good wishes, Get Well cards, flowers, fruit and chocolates during her two stays in hospital. I am sorry to say that David Sargeant is still in hospital and we all hope that his health will improve and send our good wishes to his family.

The paper collection will now take place on Sunday, April 13th, not April 6th, as stated last month.

I hope that you will all have a good Easter.

Kay Pote

 K. S. and N. E. PEACOCK
 REACH POST OFFICE STORES
 Wines Cambridge Evening News Groceries
 Beers Orders delivered weekly Fruit
 Ciders Tel: 741259 Provisions

FROM THE VICAR - continued - LENT APPEAL

The Reach Church Committee has decided this year to concentrate its efforts on responding to the appeal for a new scanner needed at Addenbrooke's Hospital. As this is of such vital importance to everyone we hope you will not be offended by the fact that we have circularised every member of the community with an envelope instead of limiting the appeal to members of the church Electoral Roll. If you feel you could help would you be kind enough to give your donation to a member of the Reach Church Committee, Miss Whitehead, Mrs. Fuller, Miss Coates, Mrs. Harrison, Major Jones or Mrs. Folkes at The Post Office.

J.K.B.

FROM THE CHURCHES

Worship in April: St. Mary's and Reach

HOLY WEEK & EASTER

- Apr. 2nd Wednesday in Holy Week
7.00.a.m. Holy Communion (St. Mary's)
- 3rd MAUNDY THURSDAY
~~7.30.p.m.~~ Holy Communion (St. Mary's)
8.00. - 9.00.p.m. Vigil before the Blessed Sacrament (St. Mary's)
- 4th GOOD FRIDAY
10.00.a.m. Matins & Ante-Communion (St. Mary's)
2.00. - 3.00.p.m. Deanery Devotion (Fordham Church)
5.00.p.m. Evensong (St. Mary's)
- 5th EASTER EVE
7.00.p.m. Renewal of Baptismal Promises (St. Mary's)
- 6th EASTER DAY
8.30.a.m. Holy Communion (Reach)
10.00.a.m. Matins and Eucharist (St. Mary's)
6.30.p.m. Evensong (Reach)
- 7th MONDAY IN EASTER WEEK
10.00.a.m. Holy Communion (St. Mary's)
- 8th TUESDAY IN EASTER WEEK
8.00.a.m. Holy Communion (St. Mary's)
- 10th Reach A.G.M. 7.30.p.m. in Church (see confirmatory notices on Church door and in Post Office).
- 13th, 20th and 27th EASTER I, II and III
9.30.a.m. Parish Communion (St. Mary's)
11.00.a.m. Family Communion (Reach)
6.30.p.m. Evensong (St. Mary's)

* We are not OUT OF REACH - for prompt attention contact *
* * * * *
* J. L. NEWMAN AND SON LIMITED *
* * * * *
* The Mills *
* Swaffham Bulbeck Tel: Cambridge 811215 *
* * * * *

PARISH COUNCIL NEWS - continued

the bus shelters; it is also intended that the collection of litter and cleaning will be improved.

Lighting

The County Council has now changed most of its street lights to the new pattern, and will soon be changing the lights which belong to the Parish Council to the same pattern. We hope that not only will the lighting be better and use less electricity, but also repair and maintenance will be simpler and more efficient.

Post Offices

The Council has discussed the government's proposals for altering the use by the Department of Health and Social Security of the Post Office for distributing various pensions, allowances and benefits. There is risk that people in "outlying" places like Reach would have to travel to collect their money, and that the business of the Post Office in these places would suffer. This further threat to living conditions in rural areas is being debated nationally, and the Parish Council has written to our Member of Parliament to express the hope that nothing need be done that would inconvenience people, or disturb the future of our Village Shop and Post Office. It is possible that there may be more concerted action through the Cambridgeshire Association of Local Councils.

PARENTS AND FRIENDS OF THE SCHOOL

We would like to thank everyone who donated to and supported the Family Disco and Easter Egg Bingo held this term and helped make them a success.

The Spring Term ends on Wednesday, 2nd April.

Next term we are holding a Beetle Drive on Friday, 25th April, at 7.15p.m. and everyone is welcome.

We have been informed that the cost of heating the schoolswimming pool in the summer could be as much as £22 a week. Although we still have some money left in the Swimming Pool Fund, raised by a sponsored walk 4 years ago, it will be necessary to hold another sponsored walk to help boost the Fund and this has been arranged for Sunday, 18th May. We hope all parents and friends will generously support the children in their efforts to keep the swimming pool heated.

The next Committee Meeting will be held on Thursday, 1st May at 7.30.p.m.

PULLERS AND FARMING GO HAND IN HAND

A. L. FULLER LIMITED

FOR ELECTRICAL INSTALLATIONS ON THE FARM
95 Clay Street, Soham, Cambs. Tel: Ely 720346
Electrical Contractors' Association
National Inspection Council for Electrical Contracting

SHIRE HALL TITBITS

Recent T.V. programmes and growing public concern regarding the international situation have thrown the spotlight on local preparation for a possible future nuclear holocaust. Bearing in mind this and the considerable local interest aroused, I devote my article this month to what the County Council, through its Emergency Planning Officer, is trying to do.

County Councils throughout Britain have a duty to make plans to cope with the effects of a nuclear attack, and in Cambridgeshire, this is the job of Mr. John Harding. Plans are being prepared which will tie the County and its six Districts into the sytem of Regional Government, which will come into operation if gvernment from London is no longer possible. The County and District Councils themselves would be reorganised to provide essential services to the population on a functional basis rather than the Departmental system we know today. Complementary to this planning, which could be described as being 'from the top down', training of volunteers has been started this Winter with each Parish Council being asked to nominate one or two persons to attend a series of 12 classes extended over two Winters.

If this country is heavily attacked, it is thought likely that as much as 75% of the population would remain alive, and that in some areas, small communities will be cut off from communication with the outside world for a long period. In such circumstances, the continued survival of individuals in those communities could depend on everyone working together to make the most of surviving resources. The Community Advisers - Parish Council volunteers - at such a time would improvise and advise as to the best measures the community as a whole should take to enhance its chances of survival in the long term.

The Community Advisers training course covers the maintenance of law and order, the control and use of resources, Health and sanitation, control and availability of food stocks in shops, firms and warehouses, the reliability of local water supplies and the factors governing contamination, the handling of refugees, measures for protection of people and livestock, mass casualty care and dissemination of information. All this is expected to be achieved in the financial year 1980/81 by the County Council spending £14,730 (net), and in this one area at least, I believe we all get full value for money, and I thank officers and volunteers who are putting so much time and work towards our vital interests.

Geoffrey Woollard, County Councillor.

FOOTNOTE

It is understood that not everyone received the recent circular from Cambs. County Council. For those who missed it, road gullies

* MIKE AND BRENDA WARRINGTON *
* * * * *

Welcome you to

DYKES END

A FULLY LICENSED FREE HOUSE

*Tel: 741745

Reach's Only Pub

continued..

and kerbs are to be re-levelled and to minimise inconvenience, work will be started at 6.00.a.m. this Tuesday and finish by 6.00.p.m. the same day.

The Council have advised that car owners leave their vehicles outside overnight, to avoid the possibility of being boxed in the following morning. Those who do not wish to leave cars in the road may use the Green.

J. E. Ster, Dept. Surveyor; East Cambs.
H.D.C.

BOTTISHAM VILLAGE COLLEGE MUSIC SOCIETY

Concerts for the Summer Term

Friday, May 2nd, at 8.00.p.m. at the Village College:-
CELEBRITY RECITAL

Richard Norton (Tenor) and Michael Pollock (Piano)

The second celebrity concert of the Music Society will be given by Richard Norton. His attractive programme will include songs by a wide selection of composers, including Faure, Finzi (The cycle 'O Fair to See'), Parry and Schubert. There will also be songs by early English composers such as Dowland and Norley and the evening will finish with a pot-pourri of sings from operettas.

Tickets: available soon from The Village College, phone Cambridge 811372. Price, £2.25 and £1.75 (Members £1.50 and £1.00). Students £1.00 and 75p.

Friday, May 16th at 8.00.p.m. at The Village College
The Cambridge Youth Orchestra

Their programme will include, hopefully, Gershwin's Rhapsody in Blue; Mendelssohn's Italian Symphony and a new work by a young, local composer.

Admission: £1.00 (members, 75p, Students 40p)

Angela Humphreys (Publicity Officer)

* HOUSDEN BROTHERS *
* * * * *

For all types of Agricultural Contracting and
earthmoving work

Manor Farm,
Reach

Newmarket 741253
Newmarket 741386

 * Glass & China Silver & Brass *
 * JO ANN DUDLEY *
 * ANTIQUE AND VICTORIAN FURNITURE *
 * Upholstery Specialists, Houses Cleared, *
 * Cabinet making. Antique restorations of all kinds *
 * Meadow House, Newmarket 742171 *
 * Swaffham Prior (Shop) Newmarket 742004 *
 * *****

THE STAINE HUNDRED

The next meeting of the Staine Hundred will be on Wednesday, the 16th April, when John Humphreys will talk about 'Bird Life in the Bedford Wash and the Fens'. The meeting will be in the Lecture Room at Bottisham Village College at 7.30.p.m.

THIS MONTH'S RECIPE

EASTER BISCUITS

(Makes about 20)

12 oz. plain flour	6oz. castor sugar
1 teaspoon baking powder	6oz. margarine
1 teaspoon mixed spice	4oz. currants
1 teaspoon cinnamon	2 eggs.

Sift flour, baking powder and spices into a bowl. Stir in sugar. Add margarine. Rub in with fingers until mixture resembles fine bread-crumbs. Stir in currants. Beat eggs lightly, add to mixture and stir until mixture begins to bind together. Roll into a ball, turn onto floured surface and knead lightly. Roll out to $\frac{1}{4}$ inch thickness and cut into rounds with a cutter. Place on greased baking tray and bake in oven Mark 5, 190°C, 375°F, for 15 minutes or until lightly coloured.

 * JOHN HARDIMENT (HEATING) LIMITED - MAINTENANCE DIVISION *
 * Immediate attention is now available to deal with your *
 * dripping tap, burst water pipe, failing solid fuel boiler, *
 * W.C. flushing, gas boiler fault or oil boiler fault. *
 * Regular maintenance to domestic and industrial systems - *
 * oil, solid fuel or gas fired. *
 * Our qualified staff can offer these various services by *
 * telephoning Burwell 741275, Ext 10. *
 * *
 * 7.30. a.m. - 5.30.p.m. Monday to Friday *
 * 7.30.a.m. - 1200 noon Saturday *
 * *****

JOHN REED

Landscape Gardener
Estimates given Free

All types of gardening work undertaken

10 Swaffham Road,
Reach

Tel: 742140
after 6.00.p.m.

BIGGS' WALL (Reach) VERY LTD.

FLEXIBLE DESIGN FOR THE RURAL ENVIRONMENT

Commissioners executed by unqualified staff

Quotations not forthcoming Astronomical prices

ALL ENQUIRIES: 10 Great Lane

Water Heaters

Immersion Heaters

RALPH G. S. WATERS

ELECTRICAL INSTALLATIONS

Industrial

Wiring

Domestic

3 Tothill Road, Swaffham Prior. Tel: Newmarket 741035

Flymo Dealer

Jet Petrol

MANCHETTS (BURWELL) LIMITED

M.O.T. Approved Testing Station

MOTOR AND AGRICULTURAL ENGINEERS

New and Used Cars Supplied - All Spares and Accessories

Ness Road Garage, Burwell.

Tel: Newmarket 741228

"SMALL ADS"

W. HUNTER

BUY & SELL THROUGH

Cycle Dealer

"OUT OF REACH"

Cycles,

ANY ADVERT ACCEPTED

Accessories & Service

25p PER MONTH PREPAID

51 North Street, Burwell

RING: 741150

