

Contents

Title	Author	Page
Amenity Fund Update	Ross Clark	15
Articles		
Ann Ivy Fuller		34
Best Wishes to Kathryn Cane		6
Bridge on the Horizon	Jo Riches	4
Meeting Liz Tabecki	Claire Halpin-McDonald	13
My First Day at Secondary School	Freya Thomas	18
My Holiday in Brittany	Jodie Halpin-McDonald	22
Swaffham Prior Parochial Charities	Pam Waters	6
Traveller's Site Update	Claire Halpin-McDonald	3
Visiting Lizy-sur-Ourcq	Jen Holmwood	3
Allotments		
News from the Allotments	David Thomas	7
Bus Timetable		37
Contact Information		39
Church		
Church News	Pat Chalmers	33
Church Services	Pat Chalmers	36
Letter	Stephen Earl	32
Pastoral Letter	Sue Evans	33
Cookery (Rita's Recipe)	Rita Dunnett	23
Crossword	Zenida McDonald	24
Days Gone By	David Parr	14
Diary Dates		38
Editorial	Claire Halpin-McDonald	2
Fen Chitchat	Lesley Boyle	12
Gallery – Macmillan Coffee Morning		40
Kids Page	Susie Tucker	19
The Intergalactic News	David Cane	20
Little Windmills	Susan Bluck	17
Mothers' Union	Zenida McDonald	16
Parish Council		
Land Available in Reach		3
District Council	Allen Alderson	28
Know Your Parish Council		5
Parish Council Meeting Draft Minutes		29

Title	Author	Page
Plants and Planting		
Conker Trees	Janet Hall	8
Ross's Reflections	Ross Clark	5
Snakehall Farm	Maz Baker	9
Speedwatch		35
Sport and Recreation		
Bellringing	Lesley Boyle	25
Reach Cricket	Ross Clark	25
Sports News	Juliet Vickery	26
Swaffham Prior Primary School	Diane Hawkes	17
Wicken Fen News	Howard Cooper	10
Wildlife		
Fen Chitchat	Lesley Boyle	12
Wildlife in the Woodlands	Alison Lewis	11
Women's Institute	Zenida McDonald and Avis Brown	15

One to One Tuition

For **Primary School** Children

Claire Acklam BEd. (Hons)

01638 743749 or
c.h.a@reach-village.co.uk

From the Editor

Our photographs in this issue record our children's first day at school and we have a delightful poem by Freya Thomas on the same subject. The Photo Gallery has pictures of the MacMillan Coffee Morning on Saturday 25th September which raised over £460!



We have two holiday articles: Jodie Halpin-McDonald visiting a zoo and goat farm in Brittany and Jen Holmwood describes her visit to Burwell's twin town Lizy-sur-Ourcq. The bellringers also enjoyed an outing. Janet Hall alerts us to the condition of the village conker tree and Alison Lewis reminds us of the local wildlife. The new bridge is formally opened and Snakehall Farm are enjoying a new addition.

Ross Clark sets us thinking with his Reflections, and Zenida McDonald promises that the Crossword is less taxing. We have Word Searches from David Cane and Susie Tucker and a yummy recipe from Rita Dunnett.

Also, do read the tremendous achievements of our very own sports men, women and children in the Cricket Report and Sports News.

Finally, anyone who would be prepared to help out at the Harvest Supper (see page 19) please call Pam King on 742866.

Keep those articles coming!

Claire Halpin-McDonald

01638 743330
claire.halpin@ascontracts.co.uk

REACH FAIR 2011

The planning for Reach Fair May 2011 will begin on **Wednesday 13th October at 8pm** in the Village Centre

Do come along if you have some ideas and would like to get involved or if you cannot come on the 13th contact Rita Dunnett (742943) or Andrew Towers (742484)

Editor's Notes

The purpose of *Within Reach* is to serve the whole village by circulating information and interesting articles free to every household in Reach. Additional copies are available at a charge of £1.50. Issues are published by-monthly which cover the dates of Dec/Jan, Feb/Mar, Apr/May, June/July, Aug/Sept and Oct/Nov.

The next copy date is **18th November 2010**.

This magazine is approved and printed by Reach Parish Council.

Editorial Team

Editor	Claire Halpin-McDonald
Production	David Parr
Advertising/Treasurer	David Parr
Distribution	Freda Lloyd Joyce Harrison
Roving Reporters	Rebecca Fordham Jo Riches
Allotments	David Thomas
Cookery	Rita Dunnett
Cricket	Ross Clark
Crossword	Zenida McDonald
Days Gone By	David Parr
Fen Chitchat	Lesley Boyle
Kids Page	Susie Tucker David Cane
Little Windmills	Susan Bluck
Mothers Union	Zenida McDonald
Neighbourhood Watch and Police	Annie Austin
Parish Council	David Parr
Plants	Janet Hall
Snakehall Farm	Maz Baker
Sport	Juliet Vickery
Swaffham Prior School	Diane Hawkes
Wicken Fen	Howard Cooper
Wildlife	Joss Goodchild Alison Lewis
Womens Institute	Zenida McDonald

Traveller's Site Update

Of the 2,000 responses to the 'Options Paper', the first of the two questionnaires related to the Consultation Process, 40% were representations from Swaffham Prior!

At the Strategic Development Committee meeting (7th September) the need and local requirement for additional pitches was debated. Currently, vacant pitches exist and there are also pitches with planning permission that has not been taken up. Almost all of the 24 pitches could be satisfied from current availability and this was agreed by the Principal Forward Planning Officer. It was also suggested that a much better solution for any additional pitches would be by adding one or two pitches to existing sites.

Following the meeting, the Swaffham Prior Village Steering Committee are cautiously optimistic of a positive outcome at the November meeting

Land Available in Reach

In our first issue of Within Reach there was an article regarding the future of 24 acres of land on the north eastern edge of the village, between Reach and Burwell which the County Council wishes to sell.

The area lies within the Wicken Fen Vision and the National Trust were asked whether they might be interested in purchasing the land – and they reacted very positively to this.

Due to its close proximity to Reach, the National Trust saw this as being an ideal opportunity for community involvement. To explore opportunities, a meeting with Chris Soans and Philip Broadbent-Yale of the National Trust took place on the 2nd of June, with over 30 villagers attending and a number of proposals were put forward.

Since then, good progress has been made in negotiations between the County Council and the National Trust. The current lease arrangements have been extended for a year during which time the National Trust will be allowed the right of first refusal on purchasing the land.

This allows more time for individual proposals to be firmed up and decided upon. The National Trust now wish to discuss further some of the proposals raised at the June meeting. Specifically they are the Orchard (Project Champion David Thomas), the Cricket (and maybe football) Pitch (Project Champion Bryan

Pearson) and the Menage (Project Champion Liz Tabecki). The Project Champions, together with other villagers, will be coming up with more detail on each of the above.

There is no guarantee that all or even any of the three proposals will be approved however the fact that the National Trust wish to discuss things further is very encouraging.

Visiting Lizy-sur-Ourcq

For several years I had thought about going to France, to Lizy-sur-Ourcq to be exact, with the Burwell Village Twinning Association. The drawback was that they went over Reach Fair weekend. However in 2007 John and I took a sabbatical and discovered Burwell's twin for ourselves. Since then the date has been changed and we can visit, guilt free, on August Bank holiday weekend instead.



If you want to find Lizy on the map it is to the east of Paris, about an hour's journey away. Meaux, famous for its brie and mustard, is the nearest city. The river Ourcq was canalised in Napoleonic times and leads to Paris where it becomes the canal St Martin. You can see why the two villages were twinned. Around about the same size they are both set in agricultural land, sugar beet being a major crop for both. Lizy is rather more undulating but both have open landscapes.

This year it was our turn to go to Lizy and a coach duly left Burwell at 5.45am on Friday August 27th. We had decided to go by car and spend extra days in France. We left at the more civilised time of 8.30 and arrived in Lizy only one hour later than the coach. On arrival at the Mairie our hosts received us with enthusiasm, drinks and nibbles. All visitors were united with hosts for the weekend. We have always stayed with Thierry and Elisabeth who have become good friends and have visited us privately and we e-mail each other in between. Thierry is the Chief Fire Officer and his house is in a compound with the fire and ambulance stations.



On the Saturday we had an outing using the Burwell coach for hosts and guests. First stop was a local prize winning brewery in a converted traditional farmhouse. After a talk and tasting, quite a lot of the product was loaded into the coach. Then we went on to a famous Chateau, Vaux le Vicompte and spent a lovely sunny afternoon touring the Chateau and the marvellous gardens.



The next day was spent with our hosts and Thierry and Elisabeth took us to Provins, a medieval town famous in the days of the Comptes de Champagne for its trade fairs. The Fete de la Moisson (harvest) was being held that day, a huge event with all the usual trappings of a French fete, great food stalls, traditional bands, a seemingly never ending procession of ancient tractors and floats. We had a great time and found it difficult to summon up the energy and the appetite for the next event of the twinning which was a four course dinner and dance in a local restaurant.

After such an action packed weekend the parting on Monday was as usual fairly emotional. All gathered at the Mairie for goodbyes and photos and eventually the

coach set off for Burwell. But we had six more days in France which we enjoyed all the more for our baptism of fire in Lizzy!

Jen Holmwood

(with apologies for omission of accents. I can only do them if I use Word.)

Bridge on the Horizon

We invited friends to bike with us and enjoy the official 'Reach Lode Bridge Opening'. It was a steady ride out of the village, past Swan Lake Barns, on past the log yard and then right at the cross roads.



A leisurely cycle and at all times of course being able to see our first destination, The Bridge!

We weren't the first to arrive and certainly not the last. About 200 people I should think all in all had gathered for the official opening. Quite a few faces from Reach but also much further afield. We took our places on the bridge, Burwell and Wicken folk to the far side and Reach and Swaffham Prior to the near side. A swift game of giant Connect 4 played by the four local district councillors to symbolise bringing the parishes together, a few 'thankyous' and then the bridge was declared officially open.



Next came freshly bbq'd burgers and people tucked into their picnic lunches. The National Trust had organised a story-telling session which seemed to go down well with the children and also paddle boarding, something for the adults to try out on the lode!

We then hopped back on our bikes and cycled over the bridge and along the new cycle path to our final destination, Wicken Fen. It's just over 2.5m to Wicken Fen along the path now so certainly very doable knowing that a cup of tea is waiting for you in their little cafe. There are even some very substantial looking benches positioned along the route if you fancy a rest.

The new bridge has made it considerably easier and quicker to get to Wicken Fen, which means I'll even have a little energy left to walk around there before heading back home!

I'm sure the arrival of the new bridge will mean more people not only enjoy Wicken Fen but will also explore alternative footpaths in the area. We'll certainly be using it frequently, but be warned and take a woolly hat - it gets pretty chilly cycling across!

Jo Riches

Ross's Reflections

Most people can name Ben Nevis as the highest point in Britain at 1,344 metres (4,409 ft) above sea level. But what about the lowest point? I ask because surveyors working for the National Trust say they have identified parts of Burwell Fen as standing at 2.5 metres below sea level.



Wouldn't it be fun, I thought, if we could claim the inverse of Ben Nevis on our doorstep. Just think of the fortunes we could rake in by opening teashops and trinket stalls – if not a theme park based on the descent into Dante's *Inferno*.

There are plenty of suggestions on the internet as to where the lowest point in Britain lies – although most of the claims are unattributed. I think we can discount the bed of Lake Windermere, which lies 29 metres below sea level – any land which lies permanently covered with water cannot claim to be the lowest point on Britain's surface. Likewise caves, coalmines and the Underground don't really count. There is an argument for counting the foreshore at Weston-Super-Mare. Sea level in Britain is defined as the mean level of the sea as measured at Newlyn in Cornwall between 1915 and 1921. The tidal range in the Bristol Channel, the second highest in the world, is around 15 metres (49 ft). Therefore if you dabble your feet in the Bristol Channel at low tide then thanks to the

second highest tidal range in the world you must be standing around 7.5 metres (25 ft) below mean sea level. But again, given that this is covered by seawater for most of the time it is questionable whether it can really count as the surface of Britain.

I rang up the Ordnance Survey who at first said there was no official lowest point in Britain, but then offered to run a check on their computers. They came up with a map reference of TL202893 – which lies near Holme near Peterborough – very close, in fact, to the iron post that was driven into the ground, with its top flush with the soil, when Whittlesey Mere was drained in 1851. Subsequent erosion and shrinkage of the peat have left the post standing four metres (12 ft) above the level of the ground. The land here is now 4.55 metres below sea level.

If we all go and jump up and down on Burwell Fen we might soon overtake it – the Ordnance Survey re-surveys the ground every five years. Or maybe we just go and dig a hole. Come to think of it, there is one place which I think the Ordnance Survey has overlooked. A few miles north of the Holme post lie the brick pits at Whittlesey. You can see them from the Ely to Peterborough train. Given that the surrounding fields are very close to sea level and the pits 30 to 40 deep, it would seem to me to have a good claim for the title. They are man-made, of course – but then so, too, are the entire fens.

Ross Clark

Know Your Parish Council

Your councillors are:

Michael Aves	Vice-Chairman	742800
Ross Clark	Chairman	743725
Rita Dunnett	Councillor	742943
Hilary Fielding	Councillor	741853
Joyce Harrison	Councillor	742405
Angela King	Councillor	742266
Helen Platt	Councillor	742331

Your Clerk is **David Parr**:

20 Fair Green Reach CB25 0JD

Tel: 01638 744081

Email: reachparishcouncil@live.co.uk

Meetings take place in the Village Centre on the first Wednesday of each month. They start at 7.30pm and all Reach villagers are welcome to attend.

In addition to their councillor duties;

Rita Dunnett is Play Spaces Officer, overseeing our two play areas and playing field.

Hilary Fielding is Neighbourhood Panels Officer and also Rights of Way Officer.

Elections for the Parish Council take place every four years with the **next election** being held in **May 2010**.

Solution to Zenida's Crossword No 2

Across:

3 plug, 6 columbus, 8 oak, 10 quiche, 11 tempura, 13 trot, 14 jam, 16 fee 17 shy, 18 daisy, 19 robin, 20 roses, 23 marshy, 26 slay, 29 realm, 30 tram, 31 nil, 32 splat, 33 rust, 34 archer, 37 helm 40 ivan, 41 dodge, 42 event, 43 lemur, 44 tendrils,

Down:

1 accent, 2 glaucoma, 3 pine, 4 goats, 5 ezra, 7 sycamore, 9 taurus, 12 madeira, 15 sigma, 18 demure, 21 shingle, 22 stalagmites, 24 reap, 25 hampered, 26.sap, 27 yttrium, 28 mars, 35 claim, 36 muddy, 38 sell, 39 mend.

Swaffham Prior Parochial Charities

Once again it is time to remind all who consider themselves eligible for our Christmas grant that they should apply as soon as possible.

As usual the majority of these applications will come from pensioners, particularly those who have to manage on the basic pension, but if you are in particular need, or know anybody who may be in difficulty, but is unlikely to apply on their own behalf, the Trustees will always be happy to consider requests for assistance.

Applications should be sent to me, or to any Trustee, and I stress that this assistance is available at all times, not merely at Christmas.

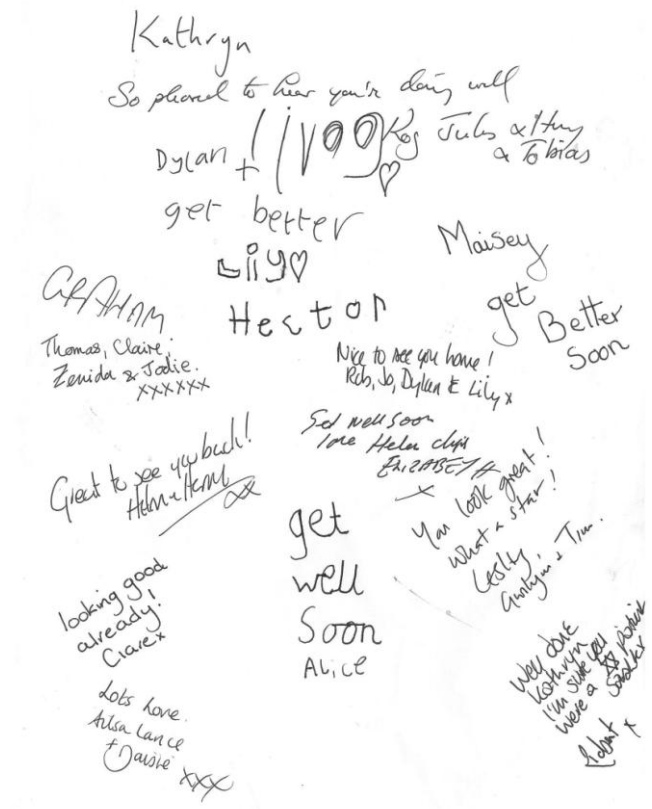
Yours faithfully

Mrs Pam Waters
Clerk to the Trustees
01638 741035

Best Wishes to Kathryn Cane



Kathryn Cane recently underwent a heart operation at Great Ormond Street Children's Hospital. She was very brave, and we send our best wishes to her and her family.



Get well soon Kathryn!

News from the Allotments

Virtuous weeds

If you have visited the allotments in recent weeks you might have been astonished at the productivity on show, as the various growers (or most of them) demonstrate their skill at producing a mixed crop of native herbaceous plants.



This little strip of land, which in January was bare earth, is now largely covered by a growth of diverse vegetation of varying density and vigour.

Of course the uninformed might think that this is a sign of neglect and believe that these are in fact weeds. Heaven forbid! How unkind to suggest that the careful creation of this assortment of crops, suitable for feeding livestock, treating ailments, making bread and casting spells, is anything but intentional. For to quote the wonderful Ralph Waldo Emerson "*What is a weed? A plant whose virtues have not yet been discovered*" (Fortune of the Republic, 1878). So let me 'discover' for you the qualities of the plants that we are growing on the allotments, so that the malicious rumours of unkempt weedy plots can be refuted.

Dominant amongst the mixed cropping being practiced is the Spear thistle, *Cirsium vulgare*. This has beautiful purple blossoms familiar to all of us, but the leaves and flowers have other uses. If you beat and crush the leaves in a mill to destroy the prickles, they are said to provide an excellent food for cattle and horses. Then once you've milked your cattle, the beautiful purple flowers can be used to curdle milk – how useful is *that*?

Another plant being cultivated is Ribwort plantain, *Plantago lanceolata*. Now with this multi-purpose crop I hardly know where to begin. You can grind the seed into a powder and add it to flour when making bread or cakes. The leaves provide a fibre suitable for making textiles and a mucilage from the seed coats can be used as a kind of fabric stiffener, whilst gold and brown dyes are obtained from the whole plant. So an entire factory in one plant – make textiles, dye them and stiffen them all in one neat package!

It's also a pretty comprehensive medicine chest. Should you start to make a shirt out of the fabric you've produced, and cut yourself in the process, then

Ribwort plantain is said to be a safe and effective treatment for bleeding, quickly staunching the blood flow and encouraging the repair of damaged tissue (extracts from the leaves have antibacterial properties). And if the bread you've made with the seeds (or the milk you curdled with thistle flowers) should disagree with your stomach, then extracts from the leaves can be used for complaints including diarrhoea, gastritis, peptic ulcers, irritable bowel syndrome, haemorrhage, haemorrhoids, cystitis, bronchitis, catarrh, sinusitis, asthma and hay fever.



Interspersed amongst the Plantain you'll find some of us growing Sow thistle (*Sonchus arvensis*). Now some readers might recognise this as food much favoured by rabbits and hares – as one old writer tells us: '*when fainting with the heat she (the hare) recruits her strength with this herb: or if a hare eat of this herb in the summer when he is mad, he shall become whole.*' (In *A Modern Herbal*, by Mrs. M. Grieve, first published in 1931 and the source of much of the wisdom in this piece). And in favouring this plant rabbits are in good company: it is recorded by Pliny (some 2000 years ago) that before the encounter of Theseus (the mythical founder-king of Athens) with the bull of Marathon, he was "*regaled by Hecale upon a dish of Sow Thistles*".

Just a few of us are growing Field scabious (*Knautia arvensis*). As its name implies (Scabious is said to be connected with the word 'scab', a word derived from the Latin *scabies* - a form of leprosy) some species of Scabious provide a remedy for skin disorders. Mixed with other herbs its juice is also said to treat stomach ulcers and remove freckles and pimples. But lest you should think that those of us with Field scabious on our allotments (myself among them) are lepers, let me explain that we are actually looking to the future, testing new ground in the production of a crop with potentially immense technological (and commercial) value. You see the seeds of Scabious contain about 25 percent oil, of which some 33-40 percent is in the form of saturated acids that are increasingly being used in high-performance oils for jet engines. At present, the only directly available sources of these

acids are coconut and palm kernel oil, so we are looking to the future markets for these products. As an added bonus it has pretty purple flowers.

Coming down to earth, you'll also find an abundance of Groundsel (*Senecio vulgaris*) on the allotments (the name Groundsel is derived from the Anglo-Saxon *grundeswelge*, meaning literally, 'ground swallower,' referring to the rapid way the weed spreads). Now Groundsel will be known to many as a popular food for canaries and budgerigars and indeed that is an important use (if anyone in the village keeps such birds please let me know and I can arrange a very good price for this year's harvest). Less well known are its medicinal properties as a purgative or emetic. According to Culpeper (the 15th Century herbalist and physician, not the high street store): "*This herb is ...very safe and friendly to the body of man, yet causes vomiting if the stomach be afflicted, if not, purging. It doth it with more gentleness than can be expected: it is moist and something cold withal, thereby causing expulsion and repressing the heat caused by the motion of the internal parts in purges and vomits.*" So if you are need of a nice moist purge, Groundsel is the herb for you.

Finally and just in case any of you should think of messing with any of us allotment growers, you'll find amongst the cabbages and cauliflowers the occasional plant of *Solanum nigrum* or Black nightshade. Whilst this has some charming uses (in Germany for example the blossoming plant is hung over the cradle of infants to act as a hypnotic), it has its more sinister side, being used in lunar magic and also as a poison (apparently acting as an irritant to the brain and spinal cord affecting the sensory nerves, the heart, the central nervous system and the gastrointestinal tract – I don't have any firsthand experience).

Well, hopefully it is now evident that the allotments aren't neglected and weedy, but simply an alternative, integrated, multi-structured approach to production: happy gardening!

"A weed is simply a plant that wants to grow where people want something else. In blaming nature, people mistake the culprit. Weeds are people's idea, not nature's" (Anon).

"A weed is a plant that has mastered every survival skill except for learning how to grow in rows" (Doug Larson, American newspaper columnist).

"When weeding, the best way to make sure you are removing a weed and not a valuable plant is to pull on it. If it comes out of the ground easily, it is a valuable plant" (Anon).

David Thomas

Conker Trees

We have several Horse Chestnut trees, (Conker, *Aesculus hippocastinum*) around the village and some are starting to look very sick. There are three problems Horse Chestnut leaf mining moth, Horse Chestnut bleeding canker and Horse Chestnut leaf blotch.



Horse Chestnut leaf blotch *Guignardia aesculi* appears as little brown blotches at the tips of the leaves often with a yellow halo around them. It is a fungal disease, but is of little importance to the trees really only affecting their appearance.

Horse Chestnut leaf mining moth *Cameraria ohridella* is what is making the trees appear as though they are going into their autumn colours early. The moth sucks out the sap from the leaves, leaving an elongated oval brown area. As the leaves come under more and more attack the leaf becomes totally brown and drops. Leaf drop stops the tree photosynthesising, therefore growing, but doesn't kill the tree although it will become weakened if it loses its leaves half way through the summer year after year. The moth originated on the continent and has spread up through the country from the south east first along the motorways and gradually into more rural areas from the roads.



Horse Chestnut bleeding canker *Pseudomonas syringae* is a serious bacterial disease. Brown patches appear on the bark, which start to ooze sticky liquid. Under the bark the wood becomes orange. If the

trunk or limb becomes encircled by the colouration it will die. This is what is happening on the Green. On some of the branches the leaves are turning yellow in the summer, this is the first sign. The patches then appear on the bark. The next year the leaves and flowers are small on that branch and in the following years the branch may die. The tree will probably live on for years, at least there is no need for its removal imminently, but dead or dying limbs may need taking out as they may suddenly break. It is thought that the bacteria enter the tree through mechanical damage so the flailing of hedgerow trees to raise the canopy may have a lot to answer for. Cuts on Chestnuts should have been made with a saw and painted with Arbrex or similar but no one realised what was happening until too late for native Conker trees. The disease has probably become a problem due to changes in the climate but it is certainly also common in our near neighbours on the continent.

Like Elms and to a certain extent Oaks, Chestnuts may become a rarity in our landscape.

Huntingdon district council has a very good page about Chestnuts. www.huntsdc.gov.uk.

Janet Hall

What's "Growing On" at Snakehall Farm?

Co-workers at the Prospects Trust celebrated Snakehall Farm's 21st birthday by unwrapping the long awaited bus shelter. The bus shelter project has taken over two years to bring to fruition and was the cherry on the top of the birthday cake this September, when co-workers, co-managers, trustees and volunteers all celebrated 21 years of growing people at our unique organic working farm.



The 21st birthday celebration was organised by a team of co-workers participating in a three year Big Lottery Funded project, Reaching for Better Chances. The co-workers have worked really hard at planning the barbeque, from making the table decorations, designing the invites to growing the salads for the burgers.

The bus shelter, now prominently situated opposite the entrance of Snakehall Farm, was erected by Greens of Mepal, just 24 hours before the planned celebration. Mannit Construction worked over the weekend to establish the groundwork so that the shelter was a real surprise for the co-workers.



The shelter project has been a real partnership effort. We worked with Speaking Up over two years ago to lobby to protect the public bus service to ensure our co-workers can travel independently to and from Snakehall Farm. We have to thank many bus shelter sponsors who have all generously given their time and funding to help make the shelter a reality. Reach Parish Council have been fantastic in their support and helped liaise with Cambridgeshire County Council and Highways. David Parr has been a voice of sense, helping cut through all the red tape which surrounds establishing new bus shelters. Reach Amenity Fund, Swaffham Prior Parochial Charity, Cambridge University Colleges, Mannit Construction and the Baily Thomas Charitable Fund have all donated funds to keep our co-workers safe and warm this winter when using the bus.

Co-workers are now using the shelter daily; they said "The bus shelter will give us a safe and dry place to wait for our bus home after a long day of farming. We have been getting very wet so are looking forward to a warmer place to wait this winter."

The bus shelter now acts as physical landmark for farm shop visitors too; the next phase is to add some tasteful signage to the shelter and to acknowledge all the sponsors and supporters of this long running project.

The summer has been a long and fruitful one for Snakehall Farm, the bus shelter and 21st party being only two of many big things happening at Prospects

Trust. We have been working hard on the renovation of the on-site farm house and are now helping move a new farmer and his family into it. Tarry and his young family will be taking up residence in the house this September and we are looking forward to his welcome daily involvement in the practical running of the farm site.

We have also started on the early establishment of an organic and traditional orchard. Watch this space or become a friend of "Tilly the Tractor at Prospects Trust" on Facebook to get involved. We are hoping that around 35 trees will be planted in conjunction with the local school and pre-school as well as local volunteers this November and December. The orchard will take several years to evolve but we really want this to become a space for all, starting with the planting of trees with local children this year and hopefully the harvesting of the apples and pears by them in years to come. Tempted? Email me at me for more information.

Tel: 01638 741551
Email enquiries@prospectstrust.org.uk or maz.baker@prospectstrust.org.uk
Web: www.prospectstrust.org.uk

Marianne (Maz) Baker

Wicken Fen News

A big thank you to everyone who joined us for our community celebration on 12 September (see picture on page 4) for the official opening of the Reach Lode Bridge and Burwell Fen cycleway (although I note from the last edition of *Within Reach* that an informal opening had been held a few weeks earlier!).



We were delighted with the turnout and hope that everyone enjoyed themselves.

The new bridge and cycleway form part of the Lodes Way running from Wicken to Bottisham which has now been signposted along the entire length with blue National Cycleway network signs. A copy of the Lodes Way leaflet, complete with a map of the route is available from the Wicken Fen Visitor Centre or online at www.wicken.org.uk



Plans are now being developed for a new crossing over Burwell Lode suitable for walkers, cyclists, horse riders and our free roaming herds of konik ponies and highland cattle. Consultants have been appointed to design the bridge and we are hoping to submit a planning application to East Cambs District Council later in the autumn.

We are having a further meeting with the County Council at the end of September regarding their proposed sale of the 24 acres of land adjacent to Reach. We hope to meet with interested parties who have expressed an interest in our proposal for the development of a community space over the coming weeks and months and are actively exploring opportunities to secure funding for the land purchase.

Planning approval was received at the beginning of September for the construction of a low level clay bund enclosing 80 hectares of Burwell Fen. This will assist the creation of mixed wetland habitat through the shallow, seasonal inundation of the enclosed area. The bund will have a maximum height of 650 mm above the surrounding ground level and once it has been re-colonised by grasses and reeds will not easily be noticeable in the landscape, in fact the new cycleway across Burwell Fen will form the Eastern end of the bund.

In August we were delighted to learn that we are to receive a grant of £224,583 from the WREN Biodiversity Action Fund. Wicken Fen was one of 10 projects nationwide to receive grants totalling £2Million aimed at helping to achieve the UK's ambitious biodiversity targets. Wren (Waste Recycling Environmental Limited) is a not for profit

business that helps benefit the lives of people close to landfill sites by awarding grants for community, conservation and heritage projects. A significant element of the grant will be spent on the Burwell Fen habitat restoration project mentioned earlier, new equipment and will help fund a new Warden post.

A major project to re-wet Sedge and Verrall's Fen is set to commence at the end of September. In recent years both fens have received little water from flooding which was once the case. The main source of water is acidic rainwater which is having a detrimental effect on the fen's delicate vegetation communities. The plan is to re-charge the water table using water from Monks Lode which has filtered through the chalk of the Newmarket Hills before flowing towards Wicken. Water taken from Monks Lode will be pumped under Wicken Lode and then lifted into a ditch using a small wind pump from where it will gradually spread out through the peat. The work will contribute towards the Governments public service agreement target for 95% of Sites of Special Scientific Interest being in favourable or unfavourable recovering condition by the end of December 2010. It will also contribute to the Water Framework Directive, European legislation which encourages everyone with an interest in water to work together to protect and improve the quality of every aspect of the water environment.

Visitors to the fen will notice that the gardens of historic Fen Cottage are looking in fantastic condition. This is thanks to the splendid efforts of co and support workers from the Prospects Trust based at Snakehall Farm (see picture below) who have been making regular weekly visits to care for the gardens. Their hard work is appreciated by us and our many visitors who enjoy the gardens.



With the summer holidays over we are looking forward to our autumn programme of events especially our first ever **Scarecrow Festival and Competition** over the weekend of 23-24 October. There are three competition classes: Individual – Under 11s, Individual 11+ (including adults) and Groups (school classes, toddler groups, clubs, WI or scouts, brownies, guides etc). You can choose any theme suitable for a family

audience, although extra marks will be awarded for local relevance, such as fen characters or animals. Please bring your entries along to Wicken Fen anytime from the 10th to 22nd October where you will be given a competition number. The scarecrows will be displayed in fen cottage garden, along the trails and picnic area during the festival.

Other events during autumn include; **Mucky Pups** – pre-school fun for little fairies (18 months to 4 years) Thurs 14 Oct 1030-1200; **Half Term at Wicken Fen**– follow our wildlife murder mystery trail, Mon 25 to Fri 29th; **Winter Wildlife** make bird feeders and food to help your garden birds through the winter months – Tues 26th ; **Batty Halloween** – come along in your spookiest outfit for some ghostly goings on Fri 29th; **Ghost Walk** (7+ years only please) Sat 30th 1830-1930.

In November we have **Mucky Pups**, pre-school fun for little pirates Thurs 11 1030-1200; **Winter Wildlife Walk** Sat 13th and Sun 28th 1000 – 1300; **Christmas Decorations Workshop** – use rush and willow to make rustic decorations for your home and Christmas tree Sat 13th 1000-1300 or 1400 -1700, **Christmas Wreath Making** Sat/Sun 27 and 28th 1000-1230 or 1330-1600. Information and tickets for all events (early booking advisable) available on 01353 720274

Howard Cooper

Wildlife in the Woodlands

I've taken my wildlife watching and photography down to the woodland this summer. Venturing off the paths and between the trees I found a lot of tiny Common Blue butterflies.



These were best seen in the early evening as they gathered along the last strips of warming sunlight. Among them were also a few Brown Argus; a species new to me and almost identical to the blues when sitting with their wings shut.

I also spotted a few Large White, which I'm sure most of you have seen plenty of this year as they came second in the Big Butterfly Count nationwide survey. There were also quite a few dragon flies, some lovely blue damsel flies and a vast number of our native Seven-Spot ladybirds – no sign of those evil harlequins here! Heading out into the large open grassy patch at the bottom of the woodland I chased

some Small Heath butterflies but they were too quick and evaded my camera.



Brown Argus



Common Blue Damselfly



Female Common Darter Dragonfly

No bears in this woodland, but plenty of bugs and beasties!

Alison Lewis

Fen Chitchat

‘You should be grateful to the National Trust.’

This was a comment heard at a recent consultation meeting held by the NT. We’re talking about **access** here, not wildlife, landscape, big houses, tea rooms or any of the other things the NT is known for and for which we are very grateful.

To give them their due, the NT is much better at listening to the local public these days, don’t you think? There are now numerous groups - User Groups, Consultation meetings - where ‘The Public’ is able to voice opinions and even consulted. The NT is much more likely to ask before they act, which is good.

The NT wants to give us more access. Apart from just being nice to us all, it is one of the terms under which it received some of its grants. But understandably although the people from the NT want to give us more access it is on their terms.

The NT, funded by benefactors, grants and member subscriptions and fundraising, generally doesn’t want to institute ‘Rights of Way’, i.e. access to a path by the public ‘as of right’. NT employees have a duty to maintain the value of their assets and having a Right of Way over the land devalues it. Therefore they usually give Permissive Routes over their land, where there is no statutory right of way, but they permit use, for the time being. The access can be taken away at any time and usually permissive routes are stopped up intermittently in order to prevent any claim being made in the future for access ‘as of right’. By permissive access the NT have given us routes across land previously inaccessible to us. Sometimes you have to negotiate cattle or wild ponies, but nevertheless a lot of this is a ‘Good Thing’.

Actually the first experience many locals have of them is the stopping up of routes that have been used for years. Harrisons Drove approaching Wicken Fen was gated by them and the land wasn’t even theirs. That was the topic of an article in the National Press. Burwell Fen Farm was completely fenced meaning that the routes along Reach and Burwell Lodes were suddenly cut off to the consternation of local fishermen and riders. The route along the bank past Guinea Farm near Wicken had been ridden by locals for many years. Fences and gates went up as soon as the NT purchased the land. In spite of talking about it, none of the previously existing access has been restored yet.

The County Council’s ‘Rights of Way and Access Team’, funded by us, the taxpayer, is the body charged with upholding existing Rights of Way and maintaining the Definitive Map - a legal record of

registered rights of way. They might also, you would expect, be responsible for *improving* access to the countryside. There are many unregistered paths, such as our historic underbank drives alongside Reach Lode. Just because a path is not on the definitive map does not mean that it is not a public path. The Countryside Agency estimated that over 10% of public paths were not yet listed on the definitive map. The Countryside and Rights of Way Act 2000 says that paths that are not recorded on the definitive map by 2026 and that were in use prior to 1949 will automatically be stopped up on 1 Jan 2026.

So time is running out to get these routes that are used but not registered put on the definitive map before they are lost. I think that the CC should be active in this and at least publicise this, but in my experience they play a very passive role. It is up to the public to make the case, collect all the evidence, fill in numerous forms and inform landowners. It is a big palaver and for a member of the public, an unfamiliar one. The CC team have the experience, the legal background, the historic records near their office, but it feels as if they don't actually advise, initiate, or do anything active to register these routes and expand our access 'as of right'. It feels as though it is a lot easier for them to devolve this improvement of our local access to a body like the NT who are giving us permissive access, but sometimes stopping up historic but unregistered access because it doesn't suit their land management plans.

So the NT are the good guys here. Yes, I am grateful to them. So, obviously, is the member of the CC Access Team who is reported to have made the original comment. Let me know your thoughts

Lesley Boyle

Meeting Liz Tabecki

Q *I believe you run your own interior design business. Tell me about that . . .*

A I have a business called Stage One Interiors. I started by staging properties to increase their value and saleability and have been doing this for about three years. I'm now branching out into interior design. I have just completed a £7 million retirement village in Bury St Edmunds. This has taken me into another area of interior design. I complete a variety of projects from individual members of the general public to large clients such as housing associations.

Q *What's your greatest success?*

A A house was on the market for two years and was valued at £319K. The client spent £4K for staging and my input and the house sold within three days for £365K.



Q *Any nightmares?*

A No nightmares, only the odd nightmare client

Q *What look is fashionable at the moment?*

A For kitchens it's gloss. White, black and grape colours. Wide drawers, twice the width of previously, and horizontal. Worktops will be glass or granite – very shiny.

Q *What colours should we be buying?*

A Yellow and tones of green towards yellow. Linked with black and grey. There is also a purple revival.

Q *And for the living room?*

A Grey is the new white. And colours which work with grey: soft grape, petrol blue and mushroom. Basically French inspired tones.

Q *Do you actually watch any of the house programmes on the telly? What do you think of them? Best? Worst?*

A I enjoy Grand Designs with its quality of projects and diversity. Sixty Minute Makeover makes me cringe. There is just insufficient time to think about the project and I can't stand seeing the wallpaper badly hung.

Q *What is your career history?*

A At Nottingham Trent University I studied Textile Design, and afterwards moved to Cambridge which was where Jan was living. I ran my own business for about five years which was an award winning bridal wear commission embroidery business.

It was really successful, but with my two children it was very time consuming and I couldn't maintain the capacity of work. A lot of the work was in London and it just wasn't practical to relocate. After becoming involved in lecturing whilst running my business I decided to increase my teaching. I taught at Cambridge Regional College, lecturing in Fashion and Textiles, and teaching the Art Foundation course. I taught for seven years, up to when Anya was in her final year at pre-school.

During my career break I took part in a TV programme and it was from then that my interior design work really started. The programme was Interior Rivalry with Channel 5 - it was a televised competition that ran for five weeks. I was filming with the American House Doctor, Ann Maurice and I was lucky enough to reach the semi-final. From several thousand applicants I got down to the last four. From that I was offered a number of courses which is where my current business was born.

Q You have two girls, Anya and Kasia, both at Bottisham Village College. How do you feel now your youngest is at senior school?

A I feel I have more time to develop my career, and it feels that time has moved very quickly. Kasia started Swaffham Prior when we moved to Reach and is now very happy at Bottisham and Anya is also enjoying it. The children are developing their interests, and are coming on in leaps and bounds. They are discovering new subjects and interests. For parents it is a very exciting time, you are always learning so much more about your children.

Q Do you think the local schools offer a good all round education?

A I was really pleased with Swaffham Prior. The children received a good all round education, and it's a very nurturing school. It's a good foundation for Bottisham. The children are confident and doing well. Bottisham has a lot to offer with many extra curriculum activities, and the teaching is very good.

Q Where and how did you meet your meet your husband Jan?

A We met at Nottingham Trent University in my first year. I was introduced to Jan through a friend in a coffee room our courses shared. I was studying Textile Design and he was studying Construction Management. That was 21 years ago in 1989

Q How long have you lived in Reach?

A 8 years.

Q What do you like about the village?

A Phew! Where do I start? It's social, safe for children, offers a lovely quality of life, and it's laid back. You can enjoy walking and exploring the local lanes without spending loads of money. It has a genuine community feel with families, and people helping each other. It has family life support systems.

It has space. You can get away from it all, but you are also close enough to Cambridge to enjoy City life.

Q I believe you are part of the village pony-set?

A The girls have ridden since they were five. Firstly with a group of children from Swaffham Prior in a one off lesson we then decided to carry on riding. We loaned ponies – Jetty at first and then we moved on to Sugar, slightly bigger. We bought our first pony Autumn two years ago and we now have a new horse Cisco. Anya, Kasia and I really enjoy riding out around Reach it is how we enjoy the village and surrounding areas. It also keeps me fit. The girls have lessons and are members of Soham Pony Club. The girls enjoy the exploring the countryside and gain a sense of responsibility which is valuable as they get older. We have made friends, meet up, and love hacking out.

Q What's your favourite: night in or night out?

A A night in with the company of friends.

Q Favourite TV soap?

A I don't watch any soaps.

Q Where do you like to shop for yourself?

A Oh dear, this doesn't happen often. I almost always start in TKMaxx. I get a sack load of things. I often find great bargains including a beautiful dress that I wore for Ladies Day recently.

Q What's your philosophy on life?

A I have a definite philosophy which is, 'live every day as if it is your last'.

Claire Halpin-McDonald

Days Gone By

The Parish Council had a busy meeting in September, due to the fact that the July meeting had been early in the month, there had been no August meeting and for some reason or other the September meeting took place on the 29th.



There were no amazing revelations from the minutes, sadly. The standpipe on the edge of the green was to be disconnected (is this the one that sits outside the pub nowadays?) and "Van Dwellers" got a mention again.

The Clerk, Alison Housden tendered her resignation and it was agreed that she should receive a special payment of £25 which was half a year's salary! Thankfully, times have changed! [**Note to Clerk, try and get this kind of arrangement firmed up in the Standing Orders**]. Ann Jennings subsequently took over the role of Clerk.

The biggest issue to be seen was that in the best kept village competition, Reach was again last. It was decided to try and find out why since a lot of work had been done to improve the look of the village. Mrs Cook, District Councillor ultimately tracked down the Chief Planning Officer and was given a list of reasons why we had come last again – sadly they were not documented. It appears we again entered the completion the following year

In Out of Reach it shows the result of the Junior Fishing match, organised by Ray Folkes, Bill Estall, Bob Smith and Mr Stearn from Fulbourn. The winning Girl was Leslie Bridgeman (7.5 ounces) and the winning Boy was Tony Kemp (3.5 ounces).

Bill Estall wrote an excellent poem and I'm sure he won't mind me reproducing it in this issue. It was entitled "**Their Day**".

As they walk to their chosen place
A smile of hope in each young face.
They chatter excited as they go
We must be ready when the whistle blow.
What number have you drawn today
Never mind I'm only six pegs away.
Have you brought the crisps the bait
The drink, the biscuits, Mum made us take.
Please Mr. Smith I'm in a terrible mess
My hook is caught up in my dress
Oh Mr. Folkes please come and look
This pinky won't stay on my hook.
At last the whistle is blown to start
This fishing match for the young at heart.
Soon a call from a far off spot
Come and see the fish I've got.
And holding it gently by the tail
Dropped it quickly in a plastic pail.
The fish are coming in now fast
I don't know if my bait will last.
I will change to a worm then, see
Cor, I don't half want to pee.
It must be all the pop I bought
I wonder how many fish have been caught.
Oh there goes the whistle once again
We must finish now, must play the game.
Here they come to weigh the fish
Hope I am top this is my wish.
Now all the fishing done for you and me
Its back home to see who the winner will be.
To hold the cup for a year with pride
And to have my name printed on the side.
We must finish now it's been great fun
Our heartfelt thanks to everyone.

In writing this piece I have the Parish Council Minutes and the Out of Reach magazines to allow me to get a flavour of what was happening, but this month I had the real pleasure of meeting up with one of the more senior residents of the village, Maisie Whitehead. She was born in the village, let's just say some little time ago and has lived here all of her life. In the next issue I plan to document as many of her memories as I can – she is a splendid lady.

The Minutes of the June and July 1977 Parish Council meetings are now on the website and whilst not as much fun to read as the old issues of Out of Reach, they do give an indication of what was important to villagers at that time. The village website is www.reach-village.co.uk.

David Parr

Amenity Fund Update

The fund purchased the new nets for the large and five-a-side goals and has recently provided money for the refurbishment of a Sports Day Cup.

Following splendid income of £1,626.78 from Reach Fair we now have unallocated funds of £3,911.91.

Women's Institute

Burwell Women's Institute

"Gardening Then and Now" was the title of the talk given by Rodney Tibbs to Burwell W.I. on 29th July. The talk was well illustrated by slides of pictures depicting gardens and gardening tools throughout the ages to the present day.



The Gardening Museum in London had provided much of the information and seems to be a good place to aid research. The conclusion was that one of the biggest changes has been in methods of cutting the grass, from the days of handling scythes to the use of modern remote controlled mowers. Several members entered the competition which was for "An Old Gardening Tool".

Apologies to Avis Brown for getting her surname wrong in the last issue of Within Reach.

Zenida McDonald

The August meeting of Burwell W.I. is traditionally a Harvest Supper, each year with a different theme. This year it was 'Tea at the Ritz'. Members were welcomed with a glass of Pimms in a hall that had been transformed by their hard-working Committee – elegant tables set with beautiful china, candelabra and flowers.



With piano music playing softly in the background, they were served with dainty, crust-less sandwiches, scones with jam and clotted cream and tiered stands of fancy cakes and pastries. It was all very stylish and delicious. Tea was followed by a Quiz, while the stalwart Committee dealt with the washing up! It was a lovely, friendly social evening.

At the Open Meeting on the 30th September, Keith Baldwin goes 'Behind the Scenes with The Household Cavalry'. The competition will be for the "Most Unusual Brass Ornament".

On the 28th October, there will be a Beetle Drive. The competition will be for a "Hand-made Hallowe'en Lantern".

On 25th November, Hilary Fielding will present "A Festive Thought". The competition will be for a "Hand-made Christmas card".

There is also a competition each month for the 'Best Bloom from your Garden'.

Meetings are held in the Gardiner Memorial Hall at 7.15p.m. for 7.30p.m. Visitors are very welcome to join us. For further information contact President Kay Tee on Tel. 01638 743191.

Avis Brown

Friends of Bottisham Village College

CHRISTMAS MARKET
28TH November 2010

We are now taking bookings from stallholders for this popular event.

Please email friends@bottishamvc.org or call us on **07747 484058** for a booking form

The Mothers' Union



The Burwell Mothers Union Programme from September to December 2010 is as follows:

8th September at 7.30pm Relationships Not Rules Bible Study.

22nd September at 2.30pm The Annual Meeting and Report on M.U. Projects, in the Guildhall, Burwell.

2nd October at 9am Women's Harvest Breakfast at the Guildhall. Speaker: Susan Bowden-Pickstock: An arm-chair view of some of Britain's lesser known gardens. There will be egg/bacon butties and drinks. No charge. Donations welcome. R.S.V.P. Susan Baker on 01638 741791 or e-mail susan.bakerhome@ntlworld.com

13th October at 10am - M.U. Communion at St. Mary's Church, Burwell.

20th October at 2.30pm - Mission Unlimited - Kay Coe at the Guildhall.

23rd October - Mothers' Union Day at Milton Church.

3rd November at 7.30pm - Prayer Beads - Ros Wright, venue not yet confirmed.

24th November at 2.30pm - M.U. Social Policy - Helen Banyard at the Guildhall.

1st December at 7.30pm - Advent Reflections.

15th December at 2.30pm - Christmas Party.

Please phone **Susan Baker** on: 01638-741791 for confirmation of dates and venues.

Many thanks to Susan for providing the above details.

The Burwell M.U. meeting held at 2.30pm on Wednesday, 22nd September in the Guildhall, Burwell followed the theme of Relationship not Rules. Susan Baker explained how the M.U. in Britain gives major support to M.U. groups all around the world, from Trinidad to Africa, from India to Papua New Guinea. Worldwide, membership is growing and more new groups are being set up, but it would be beneficial if more people could join the Mothers Union in Britain.

You do not need to be married or to have children in order to join the Mothers Union in Burwell and the group is very welcoming. Training is provided for those desiring to volunteer their services to the community. Locally, some Mothers Union members have set up courses such as 'Parenting Teenagers' and some have volunteered to facilitate educational courses at HMP Littlehey. Other members knit garments for baby units at hospitals or send gifts to a Refuge for Homeless people. Projects vary worldwide to meet the needs locally in different countries. There are many literacy and numeracy projects, especially for poor women in third-world countries, as well as agricultural advice, sewing classes and other practical help too, even to setting up a radio station in one country.

We sang, prayed, played an educational board game, then enjoyed tea and biscuits.

Zenida McDonald

Little Windmills



The summer holidays have flown by and at the beginning of September we welcomed back many familiar faces as well as several new ones. We are now offering six sessions a week so that parents can access free Government funding for the over 3's.

Activities this term revolve around the theme of autumn. As well as our annual harvest service in Reach Church we will be some autumnal craft activities, collecting conkers and leaves in the village and making a scarecrow. We will also be hearing about the children's summer holidays and carrying on a transport theme from last term. We have some exciting new resources this term including some chiffon dance scarves acquired through the Sainsbury's voucher scheme, an outdoor sand pit acquired through the Tesco voucher scheme, some super new mats for our reading and group activity areas and a new farm to name but a few.

The generosity of parents, relatives and friends enabled us to send an unprecedented donation of £200 to Barnados raised by the Big Toddle which we took part in at the end of last term.

Also a collection of old clothes, shoes, linen etc raised nearly £60. We would like to do this again and if anyone reading this would like to have a de-clutter

and help us to raise money in the process, we would be happy to receive items during the week beginning Monday 1st November during session times. Thank you in advance.

If you would like to know more about our work please look at our website www.littlewindmills.co.uk or call 0703671200 during session times.

The team at Little Windmills

Susan Bluck

RECENT 100 CLUB WINNERS		
August	Keith Lambert	£20
September	Glenn Newman	£20

Swaffham Prior Primary School



The term is whizzing by and we already find ourselves at the end of week three (although week one was very short!).

Our new Reception children are settling in well and are gradually building up their time in school. The other children are now well into their new topics and their new classroom routines.

We are very excited by our forthcoming European Languages Day on Friday 24th September (the following Sunday is actually the official European Languages Day for 2010). Each class has been given a different European country to focus on during the day. We have enlisted some "experts" in these countries and their languages to help us out. Children will undertake a variety of activities including some language learning. We are then going to have a whole school assembly in the afternoon to share what we have been doing with the rest of the school. The activities will also form the basis of our class assemblies later on in the term that parents and carers are invited to come in and watch. The countries we are learning about are: Serbia, Italy, Germany and Spain.

On a similar "languages" theme, we hosted a group of German students in school last week. They were here through a link between our churches. They spent the morning with us learning about our school, the British education system and then were kind enough to teach our pupils some German – there were echoes of "eins, zwei, drei, vier, funf....." around the playground!

We currently have a vacancy for a midday supervisor:

We need some extra help to supervise our children during their lunch break each day. This could be one or two people depending on their availability.

The person / people will be required to:

- Supervise children eating their lunches in the hall
- Supervise children playing outside to ensure their safety and well-being
- Help clear up the hall after the children have eaten
- Enjoy working with children
- Be calm, positive and friendly but firm
- Undertake a full CRB check before commencing employment

The hours of work will be 12:00-1:00 pm Monday-Friday term time only (or part of the week if preferred)

The rate of pay is £6.84 per hour

Application forms and a full job description are available from our school office on 01638 741529 or office@swaffhamprior.cambs.sch.uk

Closing date: Fri 24 September

Interviews: TBA

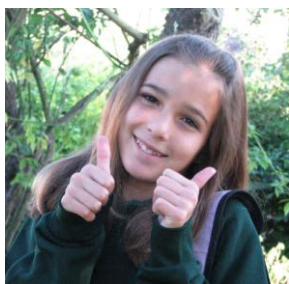
Start Date: As soon as CRB clearance is obtained

We have many events planned for the children this term including a trip to see the musical "Oliver" in London's West End, so we know that the children are going to really enjoy their learning.

Diane Hawkes
Head teacher

My First Day at Secondary School

A poem by
Freya Thomas



Walk into class on my first day of school,
Not knowing where I am at all,
Thinking carefully about my teachers,
Wondering what will be their most interesting features.

Will my maths teacher be pointy like the end of a compass?
Or weirdly lopsided, just like a rhombus?
Perhaps their face will be completely square,
Might they spend their life doing sums in their lair?

Walk into class on my first day of school,
Not knowing where I am at all,
Thinking carefully about my teachers,
Wondering what will be their most interesting features.

Perhaps my English teacher will be dressed up like Shakespeare,
And is one of those teachers whom 'everyone doth fear',
Or perhaps they will be surrounded by hundreds of books,
In which only she is allowed to look!

Walk into class on my first day of school,
Not knowing where I am at all,
Thinking carefully about my teachers,
Wondering what will be their most interesting features.

Maybe my music teacher will say everything in time,
Or insist that everything must rhyme,
Or perhaps she will sit and play the cello,
While telling us about some musician fellow.

Walk into class on my first day of school,
Not knowing where I am at all,
Thinking carefully about my teachers,
Wondering what will be their most interesting features.

Perhaps the science teacher will wear safety goggles,
To protect their eyes from the chemical fizzles,
Perhaps their hair will be wild and crazy,
I'm not really sure but maybe, just maybe.

Now it's all over I've had all my classes,
And the most interesting feature was my maths teachers..... glasses!!!

REACH CHURCH HARVEST SUPPER

**Will take place on Saturday 9th October at 7pm
in the REACH VILLAGE CENTRE**

Adults £7.50, Child £4 or Family of 4: £20

**Supper, entertainment and soft drinks provided
- bring your own wine/beer**

Tickets from: Helen Oliver 742484 or
Helenoliver01@btinternet.com
Joyce Harrison (742405) or Pam King (742866)

**Numbers limited.
No ticket sales after Monday 4th October**

THE KIDS PAGE!



S	B	C	A	E	D	A	F	G	M
A	C	H	K	I	J	U	M	N	A
S	P	H	O	L	R	T	Q	S	T
S	T	U	O	W	V	U	Y	X	H
E	Z	Y	C	O	A	M	B	H	S
M	K	N	L	Q	L	N	P	X	O
B	L	I	T	E	R	A	C	Y	I
L	P	J	F	Z	T	S	A	B	V
N	H	O	M	E	W	O	R	K	W
H	P	S	A	U	C	E	H	A	T

Can you spot the words that aren't on the list?

School

Homework

Assembly

Maths

Literacy

Autumn

1. How many apples can you fit into an empty box?

2. How far can you go into a forest?

Answers can be found on page 32

Susie Tucker



David Cane

What everyone is talking about, The big bang.

Albert Coddle says “it was all very hot and stuffy. The best thing that has ever happened, well the only thing that has ever happened.”

Mrs Anacle complains, “it was far too hot and the children are having too much fun.”



b	b	y	i	j	q	g	e	b	f
f	n	i	i	g	b	o	o	m	g
E	b	m	g	n	k	n	m	o	y
T	b	b	c	b	n	j	v	b	g
V	h	h	b	F	a	b	u	g	J
N	o	m	n	n	b	n	v	j	E
B	t	t	j	b	d	j	g	k	B
h	n	v	v	n	e	w	s	c	Y

Find.....

Big bang

News

Boom



By Jove! Tearooms

By Jove! Tearooms in Burwell, offers a quintessentially British tea experience. Since tea was imported into the United Kingdom over 300 years ago, it has been rightly chosen as the drink of the nation!

With a selection of over 25 loose teas & freshly ground coffees there is a taste to suit all discerning palates. Great effort is made to ensure we offer the widest variety of homemade cakes, always served generously! Whilst our Breakfasts, Lunches and Afternoon Teas offer the best of British produce.

By Jove! is also proud to be the home of two superb gift shops.



Why not support British with Murphy Baker Woven Heritage Gifts. We have scoured the land to

bring customers the most unique- and classic British design and wares from across the United Kingdom and Republic of Ireland. Working with companies that have over 250 years experience in their respective industries you are sure to be proud of Britannia.

So the only question is... Will You Support British?



By Jove! Tearooms & Murphy-Baker Woven Heritage Gift Shop | Call **01638 602086**
 The Old School, 30a High Street, Burwell | Visit www.byjovetearooms.co.uk
 Opening Times Mon, Tues, Thurs & Fri 10am - 5pm, Sat & Sun 10am - 5.30pm

My Holiday in Brittany

We went to Brittany we staid on the
Ferry for 7 hours. 4 hours in the car
then one more hours to the cottage.

but then we looked found the cottage. We chose

beds had dinner then went to bed.

We visited alligators bay, a zoo with big lions

and a goats farm. the best bit was stroking the

goats.

by Jodie Halpen Mc Donel D



Rita's Recipe

Chicken Casserole

The following recipe is excellent for the cooler days ahead. It comes courtesy of Joyce Harrison whom you all know produces some super food which many of you will have sampled at the various events held in the village.

Ingredients

4 chicken joints (with skin)
8 small onions
1 red pepper (deseeded and chopped)
1 bay leaf
5 fluid oz of single cream
 $\frac{1}{4}$ pint milk
Tin condensed Mushroom soup (300gms) black pepper
Chopped parsley to garnish

Method

Melt butter in a large sauce pan and fry until golden brown, add the onions and peppers and cook for 15 minutes.

Remove the chicken joints and put to one side.

Add the soup, milk and bay leaf; bring to the boil stirring continuously. Return the chicken to the pan and simmer for 45 minutes.

Finally remove the bay leaf, add the cream, black pepper and serve garnished with the parsley.



Note: I have served this dish with savoury rice as well as the usual potatoes and vegetables. Both are excellent - the choice is yours.

Rita Dunnett

Bottisham Village College Community Education

**If you have a day to spare,
try one of our Saturday Workshops this Autumn ...**

Saturday 9th October

Paper Jewellery Day, Web Page Design
Woodturning

Saturday 6th November

Dressmaking, Felt Making, Photoshop,
Playing with Print (textiles), Woodturning

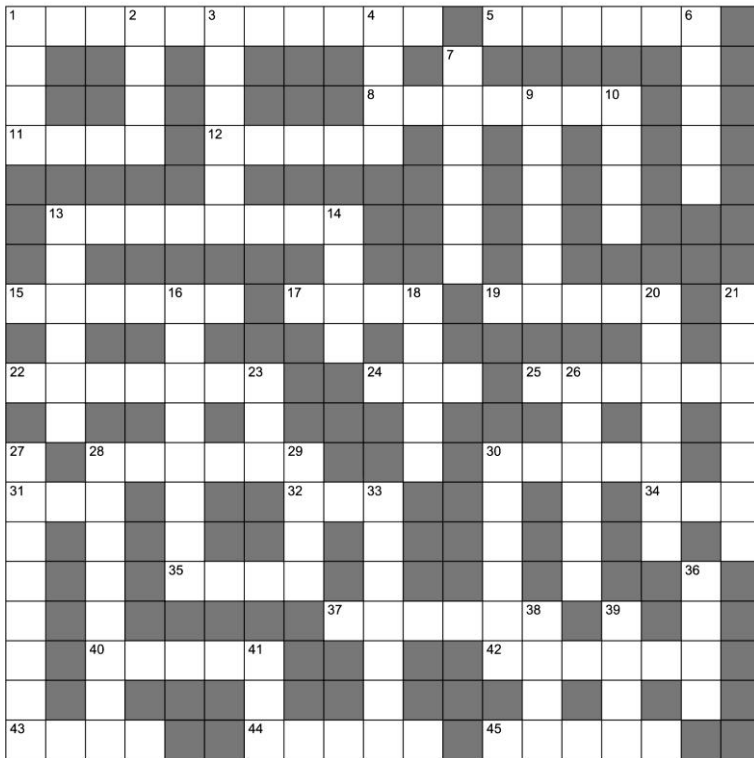
Saturday/Sunday 20th/21st November

Stained Glass Making (over two days)

For further details of the workshops, please visit our website: www.bottishamvc.org/commed, or contact the Community Office: email: commed@bottishamvc.org, telephone: (01223) 811372

Zenida's Crossword Number 3

Zenida's Crossword No. 3



A £5 Book Token will be awarded for the first correct entry opened.

Please send your entry by
Friday 3rd Sept 2010 to
Zenida's Crossword No.3,
North View House, 16 Chapel Lane,
Reach, CB25 OJJ and giving your

Name: _____

Address: _____

Tel: _____

ACROSS

- 1 Beautiful writing
- 5 Pleasant, kindly
- 8 'The Merry Wives of.....'(Shakespeare)
- 11 Robe
- 12 Express gratitude
- 13 Irish National emblem
- 15 Archers use them
- 17 Toss, flick
- 19 Toll (eg sound of bell)
- 22 Child's activity
- 24 Cover (for a tooth)
- 25 A magician uses these
- 28 Constructing
- 30 Myth
- 31 Big bird
- 32 Cover (eg for a jar)
- 34 Decay
- 35 Percussion instrument
- 37 A large vegetable
- 40 Gems
- 42 Bees like it
- 43 Indefinite number or quantity
- 44 Conscious, knowing
- 45 Keep short of

DOWN

- 1 Stop the flow
- 2 Rest against
- 3 Musical instrument
- 4 Bird of prey
- 6 Extremely angry
- 7 Plenty, sufficient
- 9 Game fish
- 10 Bay, mixed colour horse
- 13 Roll of parchment
- 14 Type of seaweed
- 16 Creased
- 18 Tartan
- 20 Reading desk
- 21 Rice dish
- 23 Aromatic spirit drink
- 26 Disorderly mob
- 27 They repair teeth
- 28 Edible fungus
- 29 Unhappy
- 30 Bird of prey
- 33 Air-head (or sleeper?)
- 36 Left side of ship
- 38 Opposite of East
- 39 Shock
- 41 Mineral spring or health resort

The answers to the previous Crossword can be found on **page 6**



Bellringing – Our Annual Outing

Summer is the season for trips out and there's nothing the bellringers like more than an outing. So on Saturday, Sept 11th, the Swaffham Bulbeck and district ringers went visiting a beautiful part of the Essex/Herts border to ring on other people's church bells.



A bellringing outing ticks a lot of boxes - it's sociable spending time with a diverse group of people and meeting new people who welcome us to their churches. I like seeing new places, especially little English villages, much like our own. You'd never go there otherwise. Churches are always interesting, whether it's the monuments, the architecture, the funny pokey corners of the church you get treated to when you're trying to find the ringing room. And then there are the bells. Tuneful, tuneless, hard work, easy. You never know till you get there. It's good practice to ring different bells though. It's always a challenge to get good ringing at an unfamiliar place, and satisfying when you succeed.



In the 'ole days, when I was a girl, the annual ringing outing was by coach (charabanc?) and we had many non-ringing wives and partners along for the occasion, and it was an 'Occasion'. Certain people got known for organising a good tour and you had to sign up early to get a place on the bus. I can remember vividly wondering what to wear for the outing. I must have been 15 or 16. I wore some very fetching dress – entirely unsuitable for bellringing – what planet was I on? Nowadays it is much more mundane and the visible evidence is a handful of cars parking up outside the church, having come from different directions because their satnavs got them lost in the Essex lanes.

We went to Great Munden, Albury, Furneux Pelham (and had lunch at the Brewery Tap pub here – quite good, although the beer was a bit pricy), Westmill and Barkway. Great Munden is a redundant church, now

privately owned by Howard Guard, film director, where we had to move a divan bed from the ringing chamber before we could start. They still hold the occasional service plus concerts, art exhibitions and plays in the round, all lit by candles. An interesting place. Their website has a cute little film showing the church's restoration in 1990, probably more neatly done than most such films. Thanks go to Derek Latchford of Bottisham for such excellent organisation.

We welcome new recruits at Swaffham Bulbeck at any time. We practise on a Wednesday at 7.30pm. Just come along if you fancy a try, or email me at lhb Boyle@googlemail.com.

Lesley Boyle

Reach Cricket

Either there is an Asian betting syndicate bribing our opponents to lose, or we are having a blinder of a season. On 18th July we took on the Rain Men.



Admittedly, it is a team which has been immortalised in a book by their captain as a bunch of ageing no-hopers who shuffle out to the wicket with the aid of zimmer frames.

Nevertheless we had never previously beaten them in four attempts, our matches usually ending with us blocking out in for a grim draw in the gloom of a damp July evening.

There was no reason to assume that this year would be any different, even when Rob Steed's 3 for 24 reduced them to a slightly under-par 157 all out. At 125 for 8 off 27 overs we seemed doomed with not even dusk falling quickly enough to save us. Yet a tenacious 57 from Tony Fordham saw us home to our third victory of the season.

Two weeks later we were back to face the Swaffham Invitationals. At present, it has to be said, they are only ever invited to play once a year - by us. Nevertheless, they are on average about half our age which showed in their energetic fielding. Set around 136 to win - the scorebook is a little vague on this one - our player of the year Ewen Cameron and our gentleman of the year Paul Robinson formed the perfect combination, one scoring runs, the other bloody-mindedly prodding about to defy the opposition's often wayward bowling. We won by seven wickets.

With confidence running high, hubris very nearly set in when we faced Petersfield (not the Hampshire club but a

bunch of odds and sods who live off Mill Road in Cambridge) on 5 September. Choosing to bat, we reached the rare but luxurious position of being able to declare our innings – on 228 for 8, with Bryan Pearson 55 and Joe Acklam 35 not out. Within a couple of overs after tea Petersfield's score was reading like a Tesco special offer -- 3 for 2 – and we were mentally preparing for the beer match. But the opposition batsmen began to knuckle down and reached 70 without further loss. Then came the breakthrough, with Paul Robinson turning an easy chance into one of the most dramatic catches of the season. From then on wickets tumbled regularly until the visitors were 124 for 8. It was not over, however and after some spirited batting, terminated by the return of Tony Fordham to the attack, we eventually won with only 15 runs to spare.

Ross Clark
743725 or rossjclark@aol.com

Sports News

Many of us think of water skiing as simply holding onto a piece of rope and being pulled along behind a boat very fast but, as John Robinson explained to me, it is much more, especially if you want to compete at the highest level as his 'clan' do!



John has been involved in water-ski-ing for almost 40 years now initially as a skier but then increasingly as a driver for his son James who in turn is now a driver for his son Harvey (22) and daughter Georgina (15).

Now Harvey, his girlfriend Lucy Gale (21) and Jack Lynch (James's stepson also aged 21) are all members of the Hunstanton Water Ski Club and divide their lives between Reach, living at John and Jan's farm, and long hours of training in The Wash.



Jack (left) with Harvey and Lucy

Some background - first, water ski racing is a team event. The driver controls the boat and looks for the best

water for the skier whilst watching the competitors around the boat. The observer faces the skier and makes sure he is skiing to maximum ability. Through an intercom system the observer relays the skier's hand signals to the driver and keeps him informed of the competition. Second, the water skiers adopt a 'wrapping style' where two ski handles are held behind the back with one hand and a third handle is held at arm's length with the other. This prevents excess strain on the back - essential when you ski for an hour at about 70 mph! Third, they race in categories according to engine size of the boat. So, for example, Formula 1 can be any engine capacity whereas Formula 2 is up to 300 horse power.

Those long hours of training on the Wash paid off last year when Lucy, Harvey and Jack all skied for Great Britain in the World Championships in Belgium. They skied four races in a thrilling week of competition. Lucy and Jack, in Formula 2 for which the GB team won the silver medal and Harvey in Formula 1 where team GB won bronze.

Almost every waterskier wants to ski the Catalina race at least. It's a course from Los Angeles Harbour to Catalina Island and back – a distance of some 75 miles - crossed by scores of fast and spectacular boats. Earlier this year Jack Lynch fulfilled that dream and in a boat borrowed from a benevolent American, he came first in his Formula One race – a fabulous achievement and perhaps a once in a lifetime experience (though apparently he is VERY keen to go back)!



Photo of Lucy superimposed on her boat

In August, Jack, Lucy and Harvey and dad James headed for Cadiz to compete in the European championships. In soaring temperatures of 48°C, that even had the Spaniards complaining, they raced on each of four days with a rest day in between with some great results.

Ladies Formula One - Lucy 4th in a ca 60km race.

Mens Formula Two - Jack 5th, Harvey 8th over 80km
Harvey also observed for his sister, Georgina, racing for the first time on the European stage

Now they are preparing for the last national race of the year at Stone in Essex in late September. Then as the nights draw in it will be back to the winter regime of building strength and endurance through gym, running and cycling sessions.

Next year the World Championships are in Australia. Another time, another place? Who knows!



Harvey Robinson (foreground) and Jack Lynch

Three weeks away (two on holiday and one 'pretending' to be an international athlete) meant I was not as organised as I should have been about gathering stories for this edition. So nothing for it than to write about someone I know extremely well – me!! My excuse being that Sept 4th was my big race of the season.



Back in early May I qualified for the GB age group team to race in the world duathlon championships in Edinburgh - think triathlon but replace the swim with a run; so its 10km run, 40km bike, 5km run. It was a rare chance to compete internationally on (almost) home ground and one not to be missed. I always knew it would be a challenging course but hill reps up Duchess Drive (near Newmarket) had not prepared me for quite how tough. Based around Arthur's Seat - a huge volcanic outcrop within Edinburgh's city limits –the first run took competitors four times up and down one side of the hill, the bike was five times round the whole thing and the run

two was up and down the hill two more times just for good measure.

I lined up with about 150 women in 3 age groups, about 50 of them in mine – lots of Americans, Canadians and South Africans, numerous Germans and New Zealanders and a few from Greece, Spain, Italy and (surprisingly) Japan. This was the day I had trained for all year - everyone else looked terrifyingly fit and strong and my legs felt like jelly. Who would end up in top slot? Would anyone crash on the bike descent 'billed' as 'dangerous and technical' ? Did I really have any hope of the podium place? The starter gun goes and the field charges off, but I have my game plan and, with 2.5 hours of racing ahead and lots of climb, it's about pacing myself. I gradually move up the field through the run and start the bike 2nd in my age group, behind a German. On bike lap two, I am passed by an American and then an Irish woman so I am now fourth and not happy! But the Irish girl soon fades and then I catch the German on lap 3. Suddenly silver seems possible, though of course I have no idea now how many others are closing on me. What I do know is the German was quicker on run one and I need to have a gap off the bike to hold on to silver but she is sticking close to my wheel. I do all I can on the fifth and final hill, it works and I just hope my legs recover from the effort quickly enough to run at all let alone 5k fast. The final run is a case of 'hanging on for grim death' and hoping she is hurting more than me. Perhaps she was, perhaps it was 'home crowd advantage' or perhaps those hill reps up Duchess Drive paid off but in the end I crossed the line with a comfortable gap. Gold may have been 52 seconds ahead and I may not have been able to walk the next day but I was ridiculously pleased with my bit of shiny silver bling!

Sometimes it seems every other resident in Reach is a horse rider! There are certainly lots of talented equestrians in the village and here is an insight to what two of them have been up to this year:



Katie Cameron, age seven, and her ponies Sugar and Merl, have had a busy summer. Katie is a member of Soham Pony Club and has been riding since she was two, training 2 or 3 times a week at the livery yard where the ponies live.

In June she came second, out of about 20 competitors, in the Mini Hunter Trial at Isleham - a timed event over a one-mile jumping course of about 15 fixed jumps, with penalties for refusals at a jump. She was then placed 1st and 2nd in local show jumping competitions in Suffolk and Fordham. Having gone clear over nine show jumps in an arena (with a course height of approx 1ft 9ins) Katie had to enter the final jump off where all clear rounds are timed against a reduced number of jumps on the same course. Her success in show jumping, combined with also doing well at dressage, spurred her on to enter her first one day events involving dressage, show jumping and cross country. This time she was placed 4th on her only her second run out.



Those who saw Katie at Reach village sports day will know that she is pretty quick on her own two feet too! So, along with her riding skills she was well set up for her first tetrathlon in August - running, swimming, riding (cross country) and "shooting". She wasn't quite old enough to use the pistols (that will come next year - much to Mum and Dad's relief!!), but on this occasion had to hit a target with a beanbag! She came a fabulous 3rd, having come first in the running and second in the swimming. Katie says this was her proudest moment so far especially the run - half a mile is a long way for 7 year old legs! Her ambition is to be a jockey, so watch out Frankie Dettori!

At 12 years old, Cleo McGregor has a little more experience under her belt particularly given she first sat on a horse when she was just 6 months old! She has lived all her life in Reach and always been passionate about horses. Her interest was kindled by her Dad, who works in the horse industry and by growing up with horses around her 'my nan has always had some ponies' she says. At five she joined the Soham pony club and now regularly represents the pony club teams. She has three ponies; one which is 12.2, a 13.2 called Cinders who she does most of her competing on and a 14.2 called Sorrel on whom she represents the (BVC) Bottisham Village College show jumping team.

Cleo trains 5 times a week and is regularly put through her paces by a local instructor who teaches some of our international riders. She likes competing most in jumping and cross country. As a runner I assumed cross country was just a case of going as fast as you can over rough terrain. Not at all, these obstacle courses can involve standard jumps, water trays and ditches and they have a target time. This is the 'ideal' time to complete the course and the aim is to get as close to that target as possible so a rider has to pace her horse carefully to not

be too slow or too fast. Cleo says her proudest moment was completing a bigger course than she had ever tackled before (a 2ft 11 [average jump size] cross country course) on a pony she had only had for two weeks! Her mum Sadie perhaps considers this one of her most traumatic moments too! Though, given that when I asked Cleo what she loved most about riding she replied 'speed!' I suspect Sadie has a few more traumatic moments to come!

Last weekend Cleo was in action at the Soham pony club show – with some great results! She won the 'pairs' (a relay race) on Cinders, was 2nd in another pairs race on Sorrel, 3rd place in the show jumping also on Sorrel. Her next outing is for the BVC team show jumping Sorrel – we wish her lots of luck!

Juliet Vickery

District Council

Proposed travellers site at Swaffham Prior

On September the 7th the Strategic Development Committee, of which I am a member, met to discuss the interim assessment of the local need for gypsy, travellers and travelling show people.



The proposed site at Heath Road, Swaffham Prior, has been a great concern for many residents within my ward. I had asked the principal forward planning officer to provide details of current need within the district. This showed that there were ample pitches for travellers to meet current needs, and future needs could be met without providing a site at Swaffham Prior.

I also showed the how the methodology used in the Site Allocations Options paper was flawed and stated that to my knowledge there has never been a need for extended family traveller pitches within the ward. At our November meeting we will now be able to dismiss the Swaffham Prior Site.

Fly tipping

It has recently been confirmed by DEFRA that EDC's performance in regard to fly tipping has improved from 'Poor' to the top grade of 'Very Effective' during the last year. This reflects the number of fly tips recorded and the level of enforcement action carried out. Also there has been an increase in checks on vehicles carrying waste and investigations into waste tipped around the district since Mark Mehaffy, the Clean Neighbourhood Enforcement Officer, was employed last year.

Councillor Allen Alderson

September Parish Council Meeting Draft Minutes

Attendance	Michael Aves	Vice Chairman	Present
	Ross Clark	Chairman	Present
	Rita Dunnett	Councillor	Present
	Hilary Fielding	Councillor	Not Present
	Joyce Harrison	Councillor	Present
	Angela King	Councillor	Present
	Helen Platt	Councillor	Not Present
	David Parr	Clerk	Present
	Allen Alderson	District Councillor	Part-time
	David Brown	County Councillor	Part-time

1. Forum for Members of the Public

Two members of the public attended to discuss a planning application as detailed in item 18.

2. Declaration of Interests

There were none.

3. Minutes of Previous Meetings

The Minutes of the previous Parish Council meeting were reviewed and signed.

4 (1) Amenity Fund Committee

No new applications have been received.

4 (2) County Council Report

August started with a meeting of the Littleport Masterplan Working Party.

The Highways Policy Review Group met on three occasions during August. As well as seeking greater flexibility in general highways policy the group considered a number of other items, some of which have already been sent to Parish Councils for comment. These other items included:

- The proposed winter gritting schedule and workings
- The role and remit of Area Joint Traffic Management Committees
- Jointly Funded Minor Highways Schemes
- A review of Environmental Weight Limits
- A paper will be presented to the Policy Development Group in September, prior to consideration by Cabinet

As a significant stakeholder, the County Council has responded to the ECDC consultation on the Local Development Framework. I have contributed to the County Council response regarding suggestions for Burwell and Swaffham Prior.

4 (3) District Council Report

It has been confirmed by DEFRA that ECDC's performance in regard to fly-tipping has improved from "poor" to the top grade of "very effective" during the last year – this improvement happening since Mark Mehaffey, the Clean Neighbourhood Enforcement Officer was employed last year.

The Department of Communities and Local Government has confirmed that ECDC is to receive £180,000 of capital funding to help deliver the Ely Country Park and £90,000 to support detailed work on Ely's Station Gateway and southern link road. ECDC will also receive £215,000 in revenue funding for growth delivering initiatives and the new Leisure Centre to be built on council owned land on the Ely bypass.

At the last Community Services Committee meeting Councillors agreed the improvement plan for Ely's markets over the next few years.

A proposal for all East Cambs taxis to be coloured silver has been deferred until a future meeting to allow for legal clarification as there was a possibility of a legal challenge by the Taxi Drivers Association.

Complaints have been received regarding the number and size of vehicles using Great Lane to transport grain to Swan Lake Barns. This use of Great Lane should cease shortly, it seems the recent inclement weather has resulted in more vehicle movements over a shorter period this harvest time.

At this point the Parish Council discussed, also the speed of the vehicles and asked **the Clerk** to express their concerns to those transporters with a view to reducing the risk to villagers in subsequent years.

4 (4) Financial Report

The Parish Council is in a financially sound situation. The auditors of our annual accounts have suggested that our reserves, as a percentage of spend each year, may be too low. The Parish Council will discuss this during the Precept discussions at the November meeting.

4 (5) Neighbourhood Panels Report

No report provided.

4 (6) Parish Council Members

No reports.

4 (7) Play Spaces Officer Report

A list of possible remedial actions for our play areas was discussed. A final list was established and ownership of each item was agreed.

4 (8) Rights of Way Report

No report provided.

4 (9) Speedwatch

There was no activity in the preceding month.

4 (10) Village Centre Committee Report

There was no meeting in August. A new dishwasher and fridge have been installed and further painting carried out.

5. Football Pitch Netting Protection

The hawthorn hedging around the football pitch results in footballs being punctured on a frequent basis with the problem being especially severe at the Burwell Road end of the ground. Since this is where the new tennis court will be located, which will provide 35 metres of protection it was decided to reassess the problem and any potential solutions once the tennis court is in place.

6. Footpaths Review - comments from Councillors on their Village Inspection

Since it has been some time since the village inspection took place it was agreed that a further inspection would take place and be reported upon at the next meeting.

7. Land Availability on Two Areas of the Burwell Road

The first area is on the right hand side of the Burwell road as you leave Reach which is used as the car park for Reach Fair. The Chairman has been in discussions with County Farms to ensure that this land is available to Reach Fair for this purpose at a reasonable cost. Recent correspondence from County Farms was discussed and **the Chairman** of the Parish Council will take this issue up with the Chairman of the Village Centre.

The second area is the 24 acres on the left hand side of the Burwell road as you leave Reach. The National Trust is interested in purchasing this land and working with Reach villagers to maximise its utilisation. The National Trust has recently received a valuation of the land which they believe is not totally unacceptable and has asked the Parish Council for help (to be provided by the Clerk) in co-ordinating a further, more in-depth meeting or meetings between interested parties within the village and the National Trust regarding potential use of the land by villagers.

8. Land Registration

It has been established that the Hythe and the Drying Ground are not registered. **The Clerk**, working with **the Chairman**, will endeavour to give them Common Land status when the window of opportunity arrives later this year, to ensure that they are protected from registration by other parties.

9. Mirror on Swan Bend – Who Owns it?

The Parish Council has been informed that the mirror was put up some 16 years ago by the then current resident of 17 Fair Green to aid traffic navigating the bend.

10. Noticeboards on the Bus Shelters

It was agreed that instead of notices being posted on the exterior of the bus shelters, a board should be placed at the interior back of the shelters. **The Clerk** will secure the necessary wood and put the boards in place. The rules established for the noticeboards during the July 2009 Parish Council meeting will be reviewed at the next Parish Council meeting.

11. Pigeon Poo - What to Do

A villager had expressed concern over pigeons leaving a mess on the swings. It was agreed that the use of “slippery paint” would be investigated by the **Play Spaces Officer**. This was discussed during item 4 (7).

12. Playground ROSPA Report

This was discussed during item 4 (7).

13. Pollution in Agricultural Land - Update

It was reported that the lorry transport of top soil to cover over the pollution should cease over the next two weeks.

14. Salt Bins (new) Locations

The Parish Council recently heard that it is proposed (but not confirmed) that Reach will be included on the primary gritting route in future. Since the Parish Council has purchased three new salt bins it was proposed that one be placed near the road that dissects the Fair Green and the other two be placed close to the first and the second bends on Great Lane as you leave the village. **The Clerk** had identified potential specific locations and these will be reviewed by Councillors over the next month and decisions made at the next meeting.

15. Snakehall Farm Bus Shelter

This is to be erected by Snakehall Farm but will subsequently become the responsibility of the Parish Council. It was agreed that the Parish Council would include the insurance of the shelter within its insurance policy and would not recharge this cost to Snakehall Farm. As regards the maintenance of the shelter, this would be carried out at the expense of Snakehall Farm and the relevant section of a letter from Snakehall Farm agreeing to this arrangement was read out by the Clerk and accepted by the Parish Council.

16. Tennis Court Update

Total funding raised should now be sufficient to purchase the court. **The Clerk** has put in a planning application and will get final tender quotations from potential suppliers for discussion at the next meeting. It is hoped to have the court in place by the end of the year.

17. Tree on Fair Green Remedial Action

The tree on Fair Green has been inspected and requires some attention. **The Clerk** has approached four suppliers for quotations and these will be assessed at the next meeting.

18. Planning Applications

Planning application 10/00702/FUL was discussed. It was felt that the extension was too big, an over-development of the site and **the Clerk** was asked to communicate this to the relevant planning officer.

19. Information Items

The Clerk will prepare a JFMHI application for a Traffic Restriction order for the Great Lane – Fair Green bend, as agreed at the January 2010 Parish Council meeting.

The Clerk will investigate the possibility of a grid being placed over the track between Hill Farm and Fitzroy Farm, thereby significantly increasing the channelling of water into the drain situated at the end of the track. The Clerk will also liaise with the occupant of Hill Farm who has expressed an interest in funding a similar solution across the entrance to his farm. The whole proposal will be costed and the possibility of it becoming a second JFMHI application investigated.

Councillor Platt has arranged for Karen Whymark (Public Right of Way Officer at Cambridgeshire County Council) and Phil Clark from the Devil’s Dyke Restoration project to come along to the next Parish Council meeting to discuss progress with the project and its impact on Reach.

The Clerk will ask Highways to look at the pothole which has been outside Snib End for some time but which has now got worse.

20. Payments

100928	CR Contracting	Mowing August	£237.00
100929	David Parr	Goal Nets (ordered online)	£100.00
100930	D. Blocksage	Cemetery Mowing August	£134.00
100931	Moore Stephens	Audit YE 2010	£155.39

The date of the next meeting will be Wednesday 6th October 2010 at 7.30pm. The Agenda for the meeting will be issued by the previous Wednesday – and will also be posted in the Parish Council area of the Reach website (www.reach-village.co.uk).

Letter from Stephen Earl

This letter first and foremost is to thank you all for a wonderful send-off at the end of July and for your prayers, good wishes and very kind gifts. It was lovely to see so many at the Gardiner Memorial Hall for lunch on our final Sunday and kind messages too from many of those unable to attend. The stunningly beautiful stained-glass panel of St Mary's has pride of place in our new home where it catches the sunlight for much of the day, and is something we shall always treasure as a reminder of 14 very good years with you all. And all the more special being designed and crafted by a member of the congregation. Abi and I were taken aback by your most generous cheque towards items for our new home which has enabled us to purchase two beautiful rugs for our hallway and living room and a good sized quality garden shed to help cater for the overspill from the house (as below). And the lovely pink rose suitably entitled "Blessings" and splendid viburnum have both found perfect sunny spots in our new garden - of a more moderate size!

The down-sizing from a rambling 8 bedroom vicarage to a much more "normal" size home has challenged our ingenuity, though helped by the fact that Tim and Helen each have their pads elsewhere these days. Not having moved home for over 14 years we'd quite forgotten what a massive upheaval it is and how much one accumulates unnecessary items over the years - things we should have given away or thrown away long ago, but held on to "just in case we might need them one day"! And a large Vicarage somehow encourages this. After lots of trips to charity shops and recycling centres before and after moving, all that we needed to bring has now found a place - even if in the shed!

"All that we *needed* to bring" of course is highly subjective and sits uncomfortably alongside the gospel imperative for those engaged in Christ's mission to "*Carry no bag, no purse and no spare shoes*"; and yet, despite all our discarding, we still filled two removal vans! Of course the context of those words of Jesus to his disciples is rather different, but the message is essentially the same. If we are to do the Lord's work and not be side-tracked, distracted or weighed down, we must be prepared to let go of some of the things we hold dear and be sure to put our whole faith and trust in the Lord Jesus Christ. Our moving has indeed involved the physical discarding of accumulated clutter and also the more difficult letting go of other less tangible things such as friendships, security, familiarity with the locality and so on. And of course you have had to let go of the Earls, and are now in an interregnum with a chance to take stock and prepare for a new chapter.

When you visit us in Lavenham, as we hope many of you will (all are welcome, though preferably not at once!) you will observe an unusual sight in the garden. You may have spotted it just before we left in Burwell Vicarage garden too. Among the leaving presents we received - very aptly given the origin of Lavenham's fame and wealth (with Woolstaplers Cottage, Dyers Hall, Wool Hall, Weavers Close, Ropers Court, Prentice Street, and so on) and of course with Abi's partiality for these woolly creatures in mind - was a full size and life-like (at least from a distance) replica sheep.



But the problem was that Baa-bara (the name she responds to) was all white. Fine for Burwell, but not for Lavenham. So recognising the need for change, she consented to "letting go" of some of her whiteness, and can now be seen as a fully-fledged Suffolk proudly displaying her black legs, face and neck. Even the local birds and muntjak seem convinced!

Like Baa-bara, the future involves changes for all of us. For Abi and myself and the congregation here in our new pastures, and for your good selves in all that lies ahead. And long may we continue to hold each other in our prayers.

By the time you read this, my Licensing here on 9th September will have taken place, and it will have been lovely to see some of you again then - but I write this before then in anticipation to meet the "Within Reach" deadline.

Abi joins me in send our warmest greetings to you all. With every blessing,

Stephen Earl

Answers to Riddles on Kids Page

1. One, and then it isn't empty any more
2. Halfway and then you are going out of it

Pastoral Letter

Give us a Clap!

We have just spent a few days holiday in North Wales (or God's country as my husband informs me it should be known!) One morning we were woken by a tremendous noise and leapt out of bed to see a large skein of Greylag geese going overhead.



These geese have apparently recently taken to spending their days feeding on nearby fields of stubble.

I was reminded of something that I learnt a few years ago when I was on a leadership course; the tutor used the behavior of geese as an example of good leadership and being part of a team. Apparently geese fly in that V formation to make it easier for the position at the front to be taken by different geese. So the lead goose has the hardest position, against the wind whilst the others get some benefit of being in the slipstream. But this is shared as other geese fly forward to take that position.

If a goose becomes injured and has to land, two others land with it and will stay, either until it recovers or until it dies. They will then keep together as they look for another skein to join. Whilst the goose at the front is taking the brunt of the work the others aren't just coasting along in the slipstream. They have a very important job; to honk encouragement from behind!

This made me think about our current situation, of being in interregnum.

As you read this the churchwardens & PCC members will have finished preparing a parish profile, considering the desirable qualities of our next incumbent and written the job advertisement which will soon go out in the national press.

Whilst all that has been happening life in Burwell church has been going on. As has been said before, Stephen has left us well equipped to keep things going for a while. But we don't want to just keep going; we want to continue to grow & to reach out to the community. The WOW team is continuing the monthly prayer walks working its way around the streets in the parish. This takes place on the 2nd Wed of the month and is then followed up by delivering cards to all the houses in the areas that have been walked that week. I hope that by now many of you will have received these cards which have a map of Burwell on one side and a message inviting people to send any specific requests for prayer to stmaryswow@gmail.com or leave at Centre Peace. On the 4th Wed of the monthly the WOW team hold a short

service of prayer for our community in St Mary's at 7pm, followed by refreshments.

We have been encouraged because the numbers at that service are, very slowly, starting to grow. As the WOW team we ourselves find it extremely helpful, uplifting and a chance to really focus on our community.

We would love more of you to come. Like the geese, we all need to help with leadership, support others and offer encouragement from behind!

And it's not just geese who know the importance of encouragement. The bible reminds us through Barnabas, whose name means Son of Encouragement that we need to encourage each other. We can all probably remember people who had a great impact on us because of their encouragement. So come along and give us a honk!

God Bless you all.

Sue Evans

Church News

A Day to Treasure

Alasdair and Olivia Coles are running a one-day seminar for couples in Chesterton on 9th October 2010 from 9.15am - 5.00pm and would be pleased if anyone from Burwell or Reach would like to join them. They write: '*Whether you are single and considering marriage, enjoy a good marriage or, like many of us have a few struggles, this seminar gives you practical and proven ideas to build a strong relationship, deal with your differences and enjoy family life.*' If you'd like to attend or find out more, please contact Alasdair on 01638 743434 or ajc1020@medschl.cam.ac.uk.

CentrePeace@Reach

Our visits to Reach on the third Wednesday of the month continue to be popular and we're pleased to see some 'regulars' as well as new visitors each time. It is our intention to keep going through the winter, so do come along. The dates are: October 20th, November 17th and 15th December. Christmas cards and gifts will be available from November.

Our Services

The list of services for October and November is shown separately, but perhaps it would be helpful to know a little more about the types of service held in Reach.

Every second Sunday of the month, we have a said service of Holy Communion at 8 o'clock, which follows the traditional service pattern and includes a short sermon, but no hymns. In addition to this regular Sunday morning service, we also hold a monthly evening service, Sunday @7, in Reach church. This is an informal service

of songs, readings and prayers, with a talk, usually by a guest speaker. The music is modern and is accompanied by a guitar and keyboard, with occasional drums! It's normally on the second Sunday too, but please note that in October it is on the third Sunday instead.

The Parish Communion services form the mainstay of the regular pattern of worship in our combined parish and, when there happens to be a 5th Sunday in the month, it is held in Reach rather than Burwell (i.e. 4 times a year). It follows the somewhat more modern Common Worship order of service and includes a sermon and both traditional and modern hymns, led by our choir and organ.

You might also be interested in one particular service held at St Mary's in Burwell on Sunday evenings about three or four times a year. It is a Service of Healing called Sunday Serenity, which provides a quiet time for spiritual renewal as well as opportunities to receive the laying on of hands and/or anointing for those for whom it is appropriate. The next such service is on Oct 3rd and everyone is welcome.

Reach Church Harvest Festival Service

Despite a power cut which affected all of Reach village for nearly five hours on Sunday 26th September, the Harvest Songs of Praise service went ahead as planned at 6 p.m. Rev. David Bush conducted the service at Reach Church in candlelight and we sang the harvest hymns with gusto, helped considerably by members from Burwell, who had braved the torrential rain to travel to Reach. Our gifts of food, collected at the service, will be donated to various charities, via Cambridge Food Bank.

Pat Chalmers

Ann Ivy Fuller

Ann Ivy Fuller (Nee Wood). Burwell and Reach resident for over 70 years. Passed away 21st August 2010.

Ann's family would like to thank everyone for the letters of condolences and donations for the Arthur Rank Hospice and for all family and friends that attended her funeral on Tuesday 31st August 2010.



We would like to thank all of the local support services: Burwell Surgery, Lloyds Pharmacy, Bartrum's who provided home support and the Arthur Rank Hospice for all their care and support in her final week's

Ann was born on the 22nd May 1936 at Waterbeach, to parents Robert and Lillian Wood. She was the youngest of their two children and sister to John. At the time they lived at Waterbeach before moving when she was two years old to Reach. The family lived at Church farm which is now The Dyke's End pub. Her father was a farmer and some of John's earlier memories were of Ann screaming her head off when her Mum went to help with chopping the beet, therefore she obviously did not like all the experiences of growing up on a farm! Although her cousin Derek remembers those days at the farm being surrounded with family and the animals as being without doubt some of his happiest childhood memories.

Ann attended Reach primary school which is now the village centre before moving to the secondary school in Burwell. On leaving school she continued to study at the Tech in Cambridge before working as a Solicitors Legal Secretary with Francis & Co.

It was during her time at the Tech that she met her friend Cammie and the two used to enjoy travelling around Europe. At the age of thirteen she met Jean and the two have been great friends ever since. I guess one of those forever people who entered each other's lives. The two enjoyed and experienced many changes over the years of growing up and maturing into young ladies. They were not only firm friends but also had a very special spiritual bond that few people experience.

Ann loved to dance, at her 21st birthday party which was held at the farm her Mum was worried that they would fall through the floor with all their dancing! It was at a dance at the Bar of the Dorothy Dance Hall in Cambridge that Ann met Don in 1959. The two began to court and in time they were married here at St Etheldreda on the 11th March 1961. They enjoyed their honeymoon at the Imperial Hotel in Russell Square in London. At the time Don was a Quantity Surveyor and as a result of his work they moved temporary to the village of Seend near Devizes in Wiltshire. It wasn't long before they moved back to Reach and lived in Hythe Lane. In 1971 Don and Ann had their own home built, no 14 Fair Green right next door to her old primary school.

It wasn't long before the two started a family and it doubled upon the arrival of their twin sons Andrew and Peter on 1st April 1962. Eighteen months later their youngest son Paul was born on the 13th December 1963. It was typical of Ann to choose biblical names for their sons.

Having three very young sons to take care of, Ann finished work to be able to be at home for them and give them the care they needed. She was a devoted Mum who not only loved her boys but also was very proud of them. She was always there for them. Don worked in London for sixteen years and would leave early each morning. Ann was a full time carer for her family.

Her sons were typical boys who loved to play out on the green with the other children. They would have to keep an eye out for Ann, as she would walk out the front door at 7.00 pm never saying anything and they knew it was time to be in. The boys would spend so much time at the farm and help out with the harvesting and other jobs. They would enjoy shooting and fishing and much of the game was hung up and Ann would cook it for them. There was the time when Ann was not happy when she heard the news that they had shot at Uncle Jack's weather vane. Although Uncle Jack wasn't worried, he never did like it!

Ann used to worry about her sons going fishing and would never let them go alone. That is until they reached the age that they didn't need to be chaperoned any more. She made them promise they would not go anywhere near the Reach pit with its 15ft drop. Well boys being boys when they couldn't catch anything in the spot they were in, went and fished at the pit. It was only in recent years that Ann heard the truth of what they used to get up to!

In time as her family grew into young men the inevitable happened and Andrew left home and married Paula in 1985. In 1989 Paul married Paula's younger sister Linda. In 1992 Peter and Caroline were married. Ann found it hard to adjust when her sons left home. It left a void, although she always said she gained three daughters when they married. One of the highlights in the family was when their first grandchild Adam was born. She had in one sense lost a son but gained a grandson. Ann was the proud Nana to Luke, Stephanie (who was the first granddaughter in the family line on Ann's Mum side since Ann was born). She was followed by Matthew, Joshua and Jamie. Ann was devoted and loved all her grandchildren equally. She would look after the next generation when her daughter in laws returned to work. She would give them gifts on their birthdays but always gave their sibling a card and gift to so as not to leave them out. She loved to make up Santa sacks for them just as she did for her own sons.

One of the things about Ann was that she was very house proud. Her home was immaculate even with having three young sons. At an early age Ann suffered with rheumatoid arthritis, however it never stopped her keeping her home beautiful. She had so many treatments over the years and operations on her hands, feet, knees and hips. She was never one to grumble or complain. When her family visited her she never let on how much pain she was in. It was only after they left that Don would find her in tears with such pain. The family tried to encourage Ann to move her bedroom downstairs to make life easier for her, but she would not hear of it. That was the best room and it was staying like it!

In 1997 Don and Ann moved to Poplars Close which was much easier for Ann to cope with.

Not only was Ann house proud but she enjoyed cooking. She loved to cook good old fashioned meals and roasts. She particularly liked home-made jam and sweets, having a sweet tooth herself. She and all the family would enjoy large family get-togethers.

Ann was an avid reader of Mills and Boons and attempted to finish a crossword in the paper every day. She also liked to be entertained with soaps especially Emmerdale and comedies. Ann liked different types of music; she liked Val Doonican, John Denver and Glen Campbell. She also liked to watch Songs of Praise and enjoy the hymns.

As a child Ann would go on holiday with her parents. From an early age she didn't lose that love of travelling. She loved the coasts and would love to go to Heacham, Bradwell and special times with her family on the Isle of Wight. Later in life Ann went on a couple of cruises with Don.

I guess each one of us with our different memories, would know Ann as a woman who never had a bad word to say about anyone. She always saw the good in others. She had the ability to treat all as equals. She was very independent and had a great sense of humour and could be

a bit mischievous in a cheeky kind of a way just like her Mum was.

Ann battled for most of her life with pain, in time she was diagnosed with cancer and fought it with great courage. She was moved to the Arthur Rank and it was there that the nurses who cared for Ann and had been trained not to get emotionally involved with the patients, told her family this was not the case with Ann. The family are truly grateful for the excellent care Ann has received particularly whilst at the Arthur Rank. The care for Ann and support to all the family has been without doubt carried out in a dignified and discreet caring way. Any donations received will go to the Arthur Rank with grateful thanks for all they were able to do for Ann. Friends in America are sending out twelve rose bushes and three rose gardens will be planted there by her sons. Ann loved to watch the two doves that would come to the bird tables outside her window so new bird tables will be also donated to brighten other patient's days.

Ann lost her brave fight against cancer on the 21st August at the age of seventy four. She died peacefully with her three precious sons at her bedside having seen Don for the last time earlier that day.

If you would like to send a donation for the Arthur Rank Hospice in memory of Ann these can be sent C/O 76 Silver Street, Burwell, Cambs, CB25 0EF.

I'm Free

**Don't grieve for me, for now I'm free
I'm following the path God laid for me.
I took His hand when I heard him call;
I turned by back and left it all.
I could not stay another day,
To laugh, to love, to work or play.
Tasks left undone must stay that way;
I found that place at the close of day.
If my parting has left a void,
Then fill it with remembered joy.
A friendship shared, a laugh, a kiss;
Ah yes, these things, I too will miss.
Be not burdened with times of sorrow
I wish you the sunshine of tomorrow.
My life's been full, I savoured much;
Good friends, good times, a loved one's touch.
Perhaps my time seems all to brief;
Don't lengthen it now with undue grief.
Lift up your heart and share with me,
God wanted me now, He set me free.**

Speedwatch

Speedwatch allows the public to get actively involved in monitoring the speed of vehicles travelling through our village. To carry on the good work, we need more volunteers to carry out the infrequent checks so please give me a call if you are prepared to give up a little of your time in this worthy cause.

David Parr (744081 or davidmparr@btinternet.com)

Church Services at Burwell and Reach



Date	St Mary's Burwell	St Etheldreda and the Holy Trinity Reach
Sun Oct 3rd - Trinity 18	8.00am Holy Communion (said) 9.30am Family Service – Harvest Thanksgiving 6.30pm Sunday Serenity Service of Healing	
Sun Oct 10th - Trinity 19	9.30am Parish Communion	8.00am Holy Communion (said) No “ Sunday@7 ” this month
Sun Oct 17th - Trinity 20	8.00am Holy Communion (said) 9.30am Parish Communion	7.00pm “ Sunday@7 ” Informal Service
Sun Oct 24th - Trinity 21 Bible Sunday	8.00am Holy Communion (said) 9.30am Parish Communion	
Sun Oct 31st - All Saints	No 8.00am Service 3.00pm All Souls Service followed by tea in the Guildhall	9.30am United (5th Sunday) Parish Communion
Sun Nov 7th - 3 rd before Advent	8.00am Holy Communion (said) 9.30am Family Service	
Sun Nov 14th - 2 nd before Advent, Remembrance Sunday	8.00am Holy Communion (said) 9.30am Parish Communion 3.00pm Act of Remembrance at the War Memorial followed by a Service in the Church	10.45am Act of Remembrance at the War Memorial followed by a Service in the Church 7.00pm “ Sunday@7 ” Informal Contemporary Worship
Sun Nov 21st - Christ the King	8.00am Holy Communion (said) 9.30am Family Service	
Sun Nov 28th - Advent Sunday	8.00am Holy Communion (said) 9.30am Parish Communion	

Bus Timetable

BUS SERVICE

Reach is served by the 10/10A bus service, provided by Stagecoach.

The difference between the 10 and 10A services is that the 10 travels via Valley Way in Newmarket whilst the 10A uses Noel Murless Drive.

A summary of all buses serving Reach and/or Swaffham Prior Monday to Saturday is shown below.

Please note that there is no bus service at all on Sundays.

Newmarket - Burwell - Reach - Bottisham - Cambridge															
Service No:	10	10	10	10	10	10	10	10	10	10	10	10	10	10	10
	M-F	M-F	Sat	M-F	Sat										
Newmarket (Guineas Station)				0704	0719	0814	0914	1014	1114	1214	1314	1424	1514	1614	1714
Burwell (Toyse Lane)	0630	0700	0715	0730	0745	0840	0940	1040	1140	1240	1340	1450	1540	1640	1740
Reach	0638	0708	0723			0848		1048		1248		1458	1548	1648	1748
Swaffham Prior	0644	0714	0729	0741	0756	0854	0951	1054	1151	1254	1351	1504	1554	1654	1754
Cambridge (Drummer Street)	0727	0807	0812	0837	0842	0937	1037	1137	1237	1337	1437	1547	1637	1737	1837

Cambridge - Bottisham - Reach - Burwell - Newmarket																
Service No:	10	10A	10	10	10	10	10	10	10	10	10	10	10	10	10	
	M-F											M-F	Sat	M-F	Sat	
Cambridge (Drummer Street)	0655	0755	0825	0925	1025	1125	1225	1325	1425	1525	1635	1645	1735	1745	1845	
Swaffham Prior	0729	0829	0902	0959	1102	1159	1302	1359	1502	1559	1722	1722	1819	1819	1919	
Reach	0732	1832		1002		1202		1402		1602				1822	1822	1922
Burwell (Toyse Lane)	0742	0842	0912	1012	1112	1212	1312	1412	1512	1612	1732	1732	1832	1832	1932	
Newmarket (Guineas Station)	0810	0910	0940	1040	1140	1240	1340	1440	1540	1640	1800	1800				

A full timetable can be downloaded from www.reach-village.co.uk/bus_service.html

Diary Dates

OCTOBER	Event	Location	Time
Sat 2	Mothers Union Harvest Breakfast	Guildhall, Burwell	9.00am
Wed 6	Parish Council Meeting	Village Centre	7.30pm
Sat 9	Harvest Supper	Village Centre	7.00pm
Sun 10	Prickwillow Ploughing Festival	Prickwillow Engine Museum & Green Farm	10.00am - 4.00pm
Wed 13	Reach Fair Planning meeting	Village Centre	8.00pm
Wed 13	Mothers' Union Communion	St Mary's Church, Burwell	10.00am
Thurs 14	Recycling Day		
Sat 16	Apple Festival	Palace Green, Ely	10.00am – 4.00pm
Tues 19	Mobile Library	Village Green	12.15pm
Wed 20	Village Centre Committee Meeting	Village Centre	8.00pm
Wed 20	Mothers' Union Mission Unlimited	Guildhall, Burwell	2.30pm
Wed 20	CentrePeace	St Etheldreda's	2.00pm - 4.00pm
Sat 23	MU's Day	Milton Church	
Thurs 28	Recycling Day		
Thurs 28	Burwell WI	Gardiner Memorial Hall, Burwell	7.15pm
Sun 31	Pub Quiz	Dyke's End	7.30pm
NOVEMBER			
Wed 3	Prayer Beads		7.30pm
Wed 3	Parish Council Meeting	Village Centre	7.30pm
Thurs 11	Recycling Day		
Tues 16	Mobile Library	Village Green	12.15pm
Wed 17	CentrePeace	St Etheldreda's	2.00pm - 4.00pm
Wed 17	Village Centre Committee Meeting	Village Centre	8.00pm
Sat/Sun 20/21 Nov	Lode Bookfest	Lode Social Club and Fassage Hall	Check out www.lodesocialclub.co.uk
Wed 24	Mothers' Union Social Policy	Guildhall, Burwell	2.30pm
Thurs 25	Recycling Day		
Thurs 25	Burwell WI	Gardiner Memorial Hall, Burwell	7.15pm
Sun 28	Pub Quiz	Dyke's End	7.30pm

Wednesdays 7.30pm onwards **Bellringing at Swaffham Bulbeck**.- new recruits will be welcome

The **Mobile Library** will now visit Reach on the third Tuesday of the month only

Pilates Classes take place in the Reach Village Centre every Tuesday - 2 classes at **7.00pm** and **8.15pm**

Contact Information

Parish Council			
	Chairman	Ross Clark	743725
	Vice Chairman	Michael Aves	742800
	Councillor	Rita Dunnett	742943
	Councillor	Hilary Fielding	741853
	Councillor	Joyce Harrison	742405
	Councillor	Angela King	742266
	Councillor	Helen Platt	742331
	Clerk	David Parr	744081
	Neighbourhood Panels Officer	Hilary Fielding	741853
	Play Spaces Officer	Rita Dunnett	742943
	Rights of Way Officer	Hilary Fielding	741853
	County Councillor	David Brown	743283
	District Councillor	Allen Alderson	741744
Village Centre			
	Chairman	Andrew Towers	742484
	Finance	Grahame Radford	742814
	Bookings	Joyce Harrison	742405
	Marquee Bookings	Andrew Hall	743737
Amenity Fund Committee			
	Chairman	Ross Clark	743725
	Committee Member	Rita Dunnett	742943
	Committee Member	John Holmwood	742969
	Committee Member	Claire Halpin-McDonald	743330
	Committee Member	Andrew Towers	742484
Church			
	Hon Assistant Priest	Reverend David Bush	741839
	Reader in Training	Frances Leadon	741770
	Priest in Retirement	Reverend David King	742924
	Parochial Church Council Member	Pam King	742924
	Churchwarden at Burwell/Reach	Pat Chalmers	742006
Emergencies			
	Electricity (Eastern Electric)		0800 783 8838
	Police (Emergency)		999
	Police (Non-emergency)		0345 456 4564
	Water (Anglian Water)		08457 145145
Doctors, Burwell			
	Appointments and Emergencies		741234
	Community Nurses		742382
	Doctors	Dr Anne Schneerson, Dr Andrew Wills, Dr Alex Manning, Dr Anthony Parry, Dr Maureen Birch	
	Surgery Hours	Mon 8.30am - 8.00pm, Tues - Fri 8.30am - 6.00pm	

Gallery – Macmillan Coffee Morning 25th September 2010

