

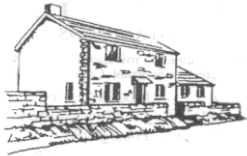
# Contents

To place an advertisement contact David Parr on **01638 744081** or **davidmparr@btinternet.com**  
**Rates:** Full page £72/year; half page £36/year; quarter page £18/year (six issues)

CATEGORY	Page
<b>Accommodation</b>	
Elm Tree Cottage, Self-Catering Accommodation, Culgaith, Penrith, Cumbria	2
Hilary's Cottage, Bed and Breakfast, Swaffham Prior	3
The Meadow House, Bed and Breakfast, Burwell	3
<b>Cars</b>	
Manchetts Rescue and Recovery	7
Manchetts Car Sales, Service and MOTs	10
<b>Carpet and Upholstery Cleaning</b>	
Rothwell's Carpet Cleaning	8
Safeclean Professional Cleaning of Carpets, Upholstery, Rugs and Leather	9
<b>Chimney Sweep</b>	
Brush Electric Sweep	7
J. L. Wight	13
<b>Cleaning</b>	
Hazel's Cleaning Services	14
<b>Computing</b>	
Burwell Computers	14
<b>Concrete</b>	
Madmix Ready Mixed Concrete	23
<b>Education</b>	
<b>One to One Tuition</b>	<b>4*</b>
<b>Electrical Services</b>	
Anglia Gas and Electrical Services	12
<b>Financial Services</b>	
Cambridge Building Society	20
Independent Financial Solutions	21
<b>Food and Drink</b>	
The Anchor, Burwell	19
<b>By Jove Tea Rooms, Burwell</b>	<b>19*</b>
The Dyke's End, Reach	22
Five Miles No Hurry Inn, Upware	2
Red2GreenHouse, Bottisham Village College	14
<b>Funeral Directors</b>	
Southgate of Newmarket	15
<b>Gardens and Gardening</b>	
Bannold Natural Hard Landscaping Materials	24
Shaun Mayes Garden Tools and Machinery	5
John Reed Landscape Gardener	8
Madingley Mulch Barks, Soils, Composts, Mulches and Conditioners	23

CATEGORY	Page
<b>Gifts</b>	
Finishing Touch, Burwell	18
<b>Hair and Beauty</b>	
Lindsey Home Hairdressing	11
Sun Studios Beauty Centre	20
<b>Handyman</b>	
Barrett Property Services	17
Get It Sorted!	18
<b>Heating and Plumbing</b>	
AMH Oil and Gas Boiler Repair and Service, Plumbing and Heating	13
Drain-Plumb Plumbing, Heating and Drain Services	10
Harrisons of Burwell Plumbing, Heating and Drain Services	9
M A Rennie Heating Services	6
Saniclean Drain and Plumbing Service	7
<b>Kitchens and Bathrooms</b>	
KEM Interiors Kitchens and Bathrooms Installation, Wood Floor and Tiling	11
<b>Nurseries - see Pre-School</b>	
<b>Oil</b>	
Browns of Burwell Oil Suppliers for Home, Farm and Industry	11
<b>Painting and Decorating</b>	
Andy Pumfrey Painter and Decorator	12
<b>Pre-School</b>	
Little Windmills Pre-School, Reach Village Centre	17
The Red House Day Nursery, Burwell	16
<b>Roofing</b>	
The Rubber Roofing Company	10
<b>Schools</b>	
Montessori School, Burwell	16
<b>Sport and Recreation</b>	
Bottisham Sports Centre	4
Jane Newbury School of Dancing	5

\* Advert is in the main magazine at page number shown



# Elm Tree Cottage

**Culgaith, near Penrith, Cumbria**

Self-catering accommodation.

You will find Elm Tree Cottage a real home from home.

3 bedroom detached house for self-catering right in the centre of Culgaith, one of the delightful fellside villages. An ideal base from which to explore the Lakes, Scottish Border Country, North Pennines, the Dales and the Carlisle to Settle Railway.

Double garage, parking, doubling glazing, central heating, open fire, sleeps 2-6 in very comfortable beds.

You will find our holiday house extremely well equipped, dishwasher, microwave, freezer, washing machine, video, colour TV's, incoming phone.

Open all year. Short breaks available in low season.

For colour pictures please see our website [www.elmtreecottage.co.uk](http://www.elmtreecottage.co.uk).

Pets Welcome

No Smoking

For further information and brochure contact Mrs H. Marsh Tel: 01638 741926

ELM TREE COTTAGE, CULGAITH, PENRITH, CUMBRIA CA10 1QW

## FIVE MILES NO HURRY INN AT UPWARE

*Lorraine and Dave welcome you to join them  
at their Riverside Restaurant and Pub*

- **Cooking 7 days and 7 nights** - All day Saturday and Sunday
- **Monday Night Special** - Main and Sweet only £6.50
- **Tuesday Night Special** - Bangers 'n' Mash only £4.00
- **Thursday Night special** - Battered Cod & Chips only £5.50
- **Friday Night special from 10.00pm** - Curry only £4.00
- **Main Menu and Specials Board**

**Regular Music Nights**

**Pool Bar - Main Bar - Beer Garden**

**Children's Play Area**

**Function Room available**

**Tel: 01353 721654**

# **BED AND BREAKFAST THE MEADOW HOUSE**

2A High Street, Burwell, Cambridge CB25 0HB

- ◆ En-suite rooms available with colour TV and tea making facilities
- ◆ Large car park and grounds
- ◆ Family rooms, children welcome
- ◆ Open all year
- ◆ Fire certificate / No smoking
- ◆ English Tourist Board 4 Diamonds

**Brian and Hilary Marsh**

Tel: 01638 741926 Fax: 01638 741861  
Website: [www.themeadowhouse.co.uk](http://www.themeadowhouse.co.uk)



# **BED AND BREAKFAST**

## **Hilary's Cottage**

Detached Holiday Cottage available for your guests in Swaffham Prior

Sleeps up to 6 people in 3 bedrooms. 2 bathrooms - one en-suite

Parking. Small secluded garden

Available for short breaks or longer lets.

**VB 4 Stars**

**Contact Hilary Marsh on 01638 741926**

Or [www.themeadowhouse.co.uk](http://www.themeadowhouse.co.uk) and follow the link to Hilary's Cottage

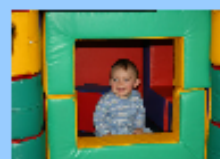
Or [www.hilaryscottage.co.uk](http://www.hilaryscottage.co.uk)

**2A High Street, Burwell, Cambs CB25 0HB**

# Bottisham Sports Centre



Lode Road  
Bottisham  
CB25 9DJ



Tel: 01223 811121

Web: [www.bottishamvc.org/sportscentre](http://www.bottishamvc.org/sportscentre)

Email: [sportscentre@bottishamvc.org](mailto:sportscentre@bottishamvc.org)

## Facilities...

### 4 lane 25 meter Swimming Pool...

Public Swim Sessions, Adults Only, Monster Island  
Fun Sessions,

**FREE Swimming for Under 16's and Over 60's!**

Contact the centre for session times.

### Sports Hall...

Football, Cricket, Netball

### Gymnasium...

Basketball, Badminton, Table Tennis

### Outside Courts...

Flood Lighted Football, Tennis and Netball

### Fitness Suite...

Brand New Resistance Machines, Upgraded CV  
Machines, Fully Accessible

## Activities...

### Workout Classes...

Spinning, Circuit Training, Aerobics, Boxercise,  
Pilates, Water Aerobics

### Swimming Lessons...

Adult and Child, Pre-school, Children's, Adults, All  
ages and abilities

### Holiday Activities...

Sports Days, Football Coaching, Water Polo,  
Bouncy Castle Sessions, Cheerleading

### Birthday Parties...

Monster Island, Bouncy Castle, Various Sports

### Sports...

Football Coaching, Judo, Swimming Lessons, Dance  
Classes

### Martial Arts...

Judo, Tang Soo Do Karate, Multi Style for adults



## Opening Times

Monday - Friday 6.45am - 10pm

Saturday - 7.15am - 6.00pm

Sunday - 7.15am - 7.00pm



# JANE NEWBURY A.I.S.T.D. C.B.

Ex Royal Ballet

## SCHOOL OF DANCING

Dance classes in Swaffham Bulbeck School Hall

### Mondays

Nursery Movement	3.00 to 3.30pm
Junior Ballet	3.45 to 4.15pm
Junior Modern Dance	4.15 to 4.45pm
Intermediate Ballet	4.45 to 5.15pm
Senior Modern Dance	5.15 to 5.45pm
Senior Ballet	5.45 to 6.30pm
Ladies Ballet	6.30 to 7.30pm

### Wednesdays

Dance Club A	4.30 to 5.30pm
Dance Club B	5.30 to 6.30pm
Adult Tap Dance	6.30 to 7.30pm



For further details please call me on **01223 812154** or email [jane@newburydance.co.uk](mailto:jane@newburydance.co.uk)

## Garden Tools & Machinery

### MINOR REPAIRS AND SERVICING

#### REPAIRED AND SERVICED

Lawn mowers  
Strimmers  
Hedge cutters

#### SHARPENING SERVICE

Rotary mower blades  
Hedge cutters  
Hand/edging shears  
Spades and hoes etc.

Gardening and Handyman services also available.

**SHAUN MAYES** 07880 931024



**TEL- 01223 881007**

- Specialists in renewable heat-pump, solar and photovoltaic systems
- MCS registered for money back grant and tariff scheme payments
- Servicing, repair and full installs of all OIL fired heating systems
- Specialists in removal and replacement of plastic and steel oil tanks
- All plumbing work including water cylinders, radiators, pipework and controls
- Full oil boiler service including nozzle and calibration for just £60
- Fast, friendly and reliable service

**Please visit [www.angliaecoheat.co.uk](http://www.angliaecoheat.co.uk) for more information**



**TEL-01223 881007**



- Suppliers and installers of plastic and steel oil tanks
  - Single skin and banded oil tanks
- Concrete bases/plinths, Steel support frames
- Emergency pump out and storage facilities
  - Oil tank and waste fuel disposals
- Oftec certified 600A to comply with all current regulations

PLEASE VISIT [WWW.ANGLIAOILTANKS.CO.UK](http://WWW.ANGLIAOILTANKS.CO.UK) FOR MORE INFORMATION

R. Bristley  
9 Collings Place Newmarket

**SANICLEAN**  
DRAIN & PLUMBING SERVICE

Drains Unblocked Fast  
Toilets, Baths & Sinks  
Guttering & Downpipes  
Drain Repairs & CCTV Surveys  
High Pressure Water Jetting  
Domestic & Industrial  
All Work Guaranteed



Tel: 01638) 662439  
Mobile: 07970 038404

R. Bristley  
9 Collings Place Newmarket

**BRUSH ELECTRIC**  
SWEEP

All Chimneys Swept  
Solid Fuel, Oil & Gas  
Cowls, Nets & Pots Fitted  
Stoves Installed  
Carpets Cleaned  
Competitive Prices  
Very Clean  
Family Business  
Public Liability Insurance



Tel: 01638) 662439  
Mobile: 07970 038404

**MANCHETTS** Cambridgeshire • Suffolk  
Rescue & Recovery

**24hr**  
response centre  
**01638**  
**742987**

*"For all your rescue & recovery needs at the roadside,  
motorbikes, vans, cars, and commercial vehicles alike"*

www.manchetts.co.uk e-mail: recovery@manchetts.co.uk  
Broads Road Burwell Cambs CB5 0BQ

# ROTHWELL'S CARPET CLEANING

[www.prideinthejob.com](http://www.prideinthejob.com)

High pressure hot water extraction  
Established 1993, and local  
Only pay if and when satisfied  
We can lift and move the furniture  
Better than D.I.Y. machines or dry cleaning  
Specialist upholstery cleaning

*If you use us you'll recommend us*

For a firm, fully inclusive price, please phone Max Campbell on

Office **01223 832 928**

Mobile **07711 675 613**

## John Reed

### Landscape Gardener

Patios  
Lawns  
Fencing  
Tree Surgery  
Pruning



*Estimates Given*

12 SWAFFHAM ROAD, REACH, CAMBS  
TEL 01638 742140



# **HARRISONS OF BURWELL LIMITED**

## ***GAS SAFETY REGISTERED***

All Plumbing, Heating and Drain Services

CORGI REGISTRATION NUMBER 12587

7 Ness Road, Burwell, Cambridge CB25 0AA

**Tel: 01638 742873**

**Mobile: 07932 773515**

***Nigel Harrison***



Professional Cleaning of  
Carpets, Upholstery,  
Rugs & Leather

**safe Organic  
Cleaning**

**Safeclean  
Cambridge Ltd**

**08700 465 528**

[www.safeclean.co.uk](http://www.safeclean.co.uk)



- Organic based cleaning solutions
- Allergy-Out anti allergy treatment
- Guardsman anti-stain protection
- Spot cleaning & stain removal
- Free advice & estimates

# MANCHETTS MOT-TO-YOU

will collect your vehicle locally and leave you with one of our smart cars. Your vehicle will then be delivered back to you.



## RELAX.

# MANCHETTS

Burwell MOT Centre, Ness Road, Burwell, Cambridgeshire CB25 0AA

Call now on **01638 744530** or email [workshop@manchettts.co.uk](mailto:workshop@manchettts.co.uk)

Finally, a guaranteed solution for your flat roof problems, proven to last over 40 years!

Does your roof suffer from any of these signs?

Moss growth • Cracks or bumps • Leaks • Expired guarantee • Or is it more than 5 years old?

Stop! Replace it now, replace it permanently and prevent misery from a leaking roof.

Before



After



Unlike felt, RubberBond EPDM will not split, leak or crack and it's tough enough to walk on. Installed in full compliance with the revised Building Regulations of April 2006!

**RUBBERBOND**  
EPDM ROOFING SYSTEMS  
APPROVED INSTALLER



Call NOW for your FREE, no obligation quotation - valid for 12 months.

**01223 258049**

Lines open 24 hours a day, 7 days a week



[therubberroofingcompany.com](http://therubberroofingcompany.com)



# DRAIN-PLUMB

*Plumbing Heating & Drain Services*

## BLOCKED DRAINS CLEARED

- Home Buyers CCTV Drain & Plumbing Surveys
- All Plumbing & Heating Repairs/Alterations
- All work Guaranteed

TEL: 01638 742873

MOBILE: 07932 773515

7 NESS ROAD,  
BURWELL  
CAMBRIDGE, CB25 0AA

## **KEM Interiors**

Specialist in Kitchens &  
Bathrooms Installation.  
Wood Floor and Tiling.

Years of Experience  
around Cambridge  
and Newmarket.

Call Serge on

**07969 134 765**

**01638 742 063**

**FREE ESTIMATE**

## **Home Hairdressing**

In the comfort of your own home

All aspects of hairdressing

Cambridge, Newmarket area.

Flexible Hours to suit you

**Call Lindsey on**

Tel : 01638 742063

Mob : 07837142117



# **BROWNS OF BURWELL LTD**



**Telephone: 01638 741306**  
Email: [sales@brownsofburwell.co.uk](mailto:sales@brownsofburwell.co.uk)  
[www.brownsofburwell.co.uk](http://www.brownsofburwell.co.uk)



**Registered  
Technician**

Fuel Oil Suppliers for the Home, Farm and Industry.  
Lubricants, Bottled Gas and Pre-Packed Coal.

**Oftec Registered** tank suppliers and installers.  
Compliant with all the new rules and regulations.

**Better service & Better prices,**  
It's what you deserve from your local distributor.

# Andy Pumfrey

Swaffham Prior

## Painter and Decorator

Many property maintenance tasks undertaken

A courteous, polite and considerate service at all times

Please call to discuss your requirements

Tel: 01638 741376

Mob: 07880 625159

10 High Street, Swaffham Prior, CB5 0LD

## ANGLIA GAS & ELECTRICAL SERVICES



No 150846

- Sales - Service - Repairs - Installation
- NG/LPG Gas Boiler/Central Heating Repairs & Servicing
- NG/LPG Gas Appliances/ Dual Fuel Appliances
- NG/LPG Landlord Safety Checks
- NG/LPG Residential Park Homes/Caravans
- Electrical Appliances Installation repairs/PAT Testing
- Essential Electrical & Plumbing Repairs/Maintenance

**Contact: Jim Perry**

Phone/Fax: (01638) 741432

Mobiles: 07768 856456 or 07740 088808

**Email: [jimperryages@ntlworld.com](mailto:jimperryages@ntlworld.com)**



**AMH**  
SERVICES

(Formally Peter Briggs)



**ANDREW HERRING**

**OIL & GAS BOILER REPAIR & SERVICE  
PLUMBING & HEATING SPECIALIST  
24hr CALL OUT**

ENQUIRIES and EMAIL  
AMHSERVICES298@AOL.COM

TEL/FAX 01638 560970  
MOBILE 0781 3536772

# CHIMNEY SWEEP

**J. L. WIGHT**

**Guild of Master Sweeps**

**Problems solved/Quality advice**

**Certificates issued**

**HETAS Approved**

**01954 253315**

**[www.camsweep.co.uk](http://www.camsweep.co.uk)**

**26 Cow Lane, Rampton**



# Farmshop and Nursery

Farmshop opening times: Tuesday to Friday 9 am to 3:30 pm

Red2Greenhouse is a local charity working with adults with learning disabilities and pupils from Bottisham Village College.

We offer a range of locally grown fresh fruit and vegetables, herbs, perennials, alpines, bedding plants for all seasons, homemade jams and pickles. We operate a veg box delivery service to Guy, Lode, the Swaffhams, Bottisham, Longmeadow, Burwell, and Reach. Places are available for new students.

**Red2Greenhouse**

Bottisham Village College  
Lode Road  
CB25 9DL

Tel. 01223 813850

email: [red2greenhouse@red2green.org](mailto:red2greenhouse@red2green.org)

Follow signs via school swimming-pool car park  
to the Community Garden

Registered charity no. 1112429

## **BURWELL COMPUTERS**

We provide a full range of computer repairs and information technology support services to businesses and home users.

- VIRUS & SECURITY • EMAIL & INTERNET
- BROADBAND • WIRELESS • ROUTERS
- NETWORKS • SERVERS • UPGRADES
- REPAIRS • NETWORK CABLING

Tel/Fax: **01638 742702**

Mobile: **07901 556895**

[support@burwellcomputers.co.uk](mailto:support@burwellcomputers.co.uk)  
[www.burwellcomputers.co.uk](http://www.burwellcomputers.co.uk)

## **HAZEL'S CLEANING SERVICES**

**Office and Domestic Cleaning**

**Prompt and Reliable Service**

**References Available**

**Tel:** 01353 727772

**Mobile:** 07786 972475



# SOUTHGATE OF NEWMARKET

*A local family owned business offering  
personal attention and understanding*

**FUNERAL DIRECTORS**

**J.A. Fuller, T.D. Fuller, P.S. Fuller DipFD.**

25 Duchess Drive  
Newmarket  
Suffolk  
CB8 8AG

**01638 662480** (24Hour Service)

*Private Chapels of Rest*

*Floral Tributes and Memorial Masonry arranged*

*Golden Charter Pre-Payment Plans available*

*Traditional Horse Drawn Hearse a dignified alternative*





## The Red House Day Nursery

Quality day care for pre-school children aged from 3 months to 5 years

### Learning through creative play

Open from 8am to 6pm  
Monday to Friday

**For more information  
ring 01638 741174  
90 HIGH ST,  
BURWELL,  
CAMBS CB25 0HD**

Email: [redhousenursery@aol.com](mailto:redhousenursery@aol.com)



**Spring Close  
Montessori  
School,  
Burwell**

*'a peaceful, yet vibrant environment with children absorbed in learning'*

*'an Education for Life'*

Nursery Education for  
2½ - 5 year olds,

3 terms - term time only  
Monday to Friday,  
9 am – 1 pm

Accepts Early Years Education  
Fund & Ofsted Inspected

Well-trained, experienced staff

Waiting list



**Don't leave it too late!  
Come for a visit**

Enquiries to:  
Mrs Christine Hobbs,  
The Guildhall, Spring Close,  
Burwell, Cambs CB5 0HF  
Tel: 01638 743304  
Email:  
[scms@scms.wanadoo.co.uk](mailto:scms@scms.wanadoo.co.uk)





## **Play, learn, grow**

Pre-School for 2 to 5 year olds at Reach Village Centre

Session times from September 2010 are:  
Monday 9.15 to 11.45 and 11.45 to 14.15  
Tuesday to Friday 9.15 to 11.45  
Term time only

Please ring 07803 671200 during sessions for more information and to arrange a visit

Early Years Funding Vouchers accepted

[www.littlewindmills.co.uk](http://www.littlewindmills.co.uk)

# **B.P.S.**

## **Barrett Property Services**

**We specialise in . . . .**

- **Plastering and Dry Lining**
- **Floor Screeds**
- **Rendering and Coving**
- **Clunch Restoration**
- **Small Building Works Undertaken**

**Call Tony on 07748 627983 or 01638 742349**

# Get it SORTED!

We all have those annoying little jobs that never seem to get done such as:

The small painting job

The appliance that doesn't work properly

That shelf that hasn't been put up

The door that won't close PROPERLY

The dripping tap

But now is the time to get it SORTED!

**Tel:** Grahame on 07842 126270 for a free estimate

No job too small. Reliable and trustworthy.

14 Ditchfield, Reach CB25 0JA **Email:** [getitsorted@btinternet.com](mailto:getitsorted@btinternet.com)



- Affordable gifts for all occasions
- Parking
- Wrapping service
- Come and see us first, you'll be glad you did!

*We Sell.....*

- Gifts
- Jewellery
- Pictures
- Mirrors
- Furniture

**and much more...**

**Opening Times**

Monday - Friday	10.00am - 5.00pm
Saturday	10.00am - 4.00pm

We are open  
Monday to Friday  
10am to 5.00pm,  
Saturday 10.00am  
to 4.00pm

**Finishing Touch 59 High Street Burwell Tel: 01638 744377**



Simon and Gaye welcome you to the Anchor near the river in Burwell which we have refurbished to create a warm, welcoming environment.

Stonebaked pizzas, fresh pasta, risottos and salads

Pub classics and a Traditional Sunday lunch

Great selection of wines and real ales

Italian coffees, hot drinks and cookies

Booking recommended

<b>OPENING HOURS</b>	
Monday to Wednesday	Midday to 3pm, 6pm to 11pm
Thursday	Midday to 3.00pm, 6 to 11.30pm
Friday and Saturday	Midday to 12.30am
Sunday	Midday to 11pm

<b>FOOD IS SERVED</b>	
Monday	Midday to 2.30pm, 6pm to 9.30pm
Tuesday to Thursday	Midday to 2.30pm, 6pm to 9pm
Friday and Saturday	Midday to 2.30pm, 6pm to 9.30pm
Sunday	Midday to 4.00pm

Patio, garden, children's play area, highchairs and baby-change with ample parking and disabled access

All kinds of functions and parties catered for

Mondays 2 for the price of 1 pizza from 6pm (offer not available on takeaway)

Tuesday and Wednesday lunchtimes we offer a 20% discount for senior citizens

Friday is Mum's coffee morning from 9.30am in term time. Pre-schoolers welcome, toys and books available

Please visit our website

**Tel:** 01638 741101

**The Anchor** 63 North Street, Burwell, Cambridge CB25 0BA

**Email:** info@theanchorburwell.com

**Website:** www.theanchorburwell.com

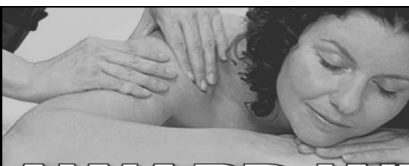
# Expertise on your doorstep

63 High Street **Burwell** Cambridge CB25 0HD  
Mon - Tue 9am - 5pm Wed 9:30am - 5pm Thu - Fri 9am - 5pm Sat 9am - 12pm

**Customer Hotline** Tel 0845 6013344  
Open 7 days a week

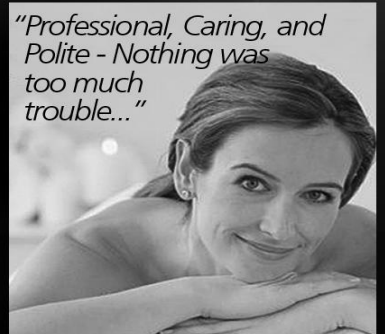
**CAMBRIDGE**  
BUILDING SOCIETY  
Time to keep your money close to home

Head Office Administration Centre PO Box 232 51 Newmarket Road Cambridge CB5 8FF  
Tel 0845 601 3344 [www.cambridgebs.co.uk](http://www.cambridgebs.co.uk)



experienced, friendly, affordable & local

## AWARD WINNING BEAUTY CENTRE



*"Professional, Caring, and Polite - Nothing was too much trouble..."*

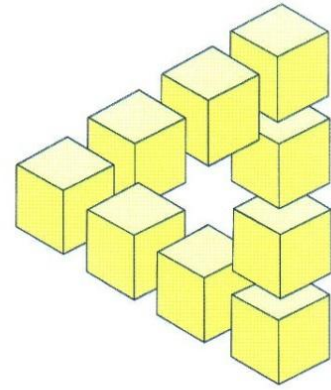
- Collin Facials • Body Treatments • Weight Control • Massage • Breast Lifting
- Waxing & Electrolysis • Microdermabrasion • Nail bar • Tanning



CAMBRIDGE 01223 411500  
NEWMARKET 01638 389339  
[www.sun-studios.co.uk](http://www.sun-studios.co.uk)

147 High Street, Cherry Hinton, Cambridge CB1 9LN





## INDEPENDENT FINANCIAL SOLUTIONS

You know that the State Pension is not enough, but you don't know what it will provide!

You want to save for your retirement, but you don't know what you will need!

You wish to protect your family against financial disaster, but don't know what cover you require!

You need to make your money work hard, but don't know which option is best for you!

You would like to reduce your tax bill, but you don't know how!

.....

**Whether you own a company, are self employed, employed or retired,  
we can help!**

**We don't believe in adding to your problems.**

**We believe in clear and simple solutions.**

Let us provide you with an **INDEPENDENT**  
review of your financial situation.

**Tel: 01638 615343 or Fax: 01638 615342**

**E-Mail: [qc@independent-financialsolutions.co.uk](mailto:qc@independent-financialsolutions.co.uk)**

**Website: [www.independent-financialsolutions.co.uk](http://www.independent-financialsolutions.co.uk)**

**Newnham Farmhouse, 16 Low Road, Burwell, Cambs, CB25 0EJ**

**Partners: Quentin Cooke (authorised Independent Financial Adviser) & Alison Cooke**

What you receive from your pension will depend on the performance of your fund.  
Investment funds can go down in value.



# The Dyke's End

In an age when pubs have been ruined by chilled-food suppliers and “trendy” alco-pops, we are pleased to offer what we regard as a traditional English pub.

A ticking clock, a real fire, candles on scrubbed tables, excellent food and a brewery to boot.

	Opening Hours	Kitchen Open
<b>Monday</b>	6pm to 11pm	Kitchen closed
<b>Tues to Friday</b>	Midday to 2pm, 6pm to 11pm	Midday to 2pm, 7pm to 9pm
<b>Saturday</b>	Midday to 11pm	Midday to 2pm, 7pm to 9pm
<b>Sunday</b>	Midday to 11pm	Midday to 2pm
<b>Bank Holidays</b>	Please telephone us to confirm our opening times	

You risk disappointment if you don't book in advance so please give us a call during our Opening Hours on **01638 743816**

**Quiz Night** takes place on the last Sunday of every month, starting at 7.30pm

You can download all of our menus from our website at **[www.dykesend.co.uk](http://www.dykesend.co.uk)**



We look forward to welcoming you to our lovely pub

**The Dyke's End**, 8 Fair Green, Reach, Cambridge, CB25 0JD.  
**Tel:** 01638 743816    **Email:** [simon@dykesend.co.uk](mailto:simon@dykesend.co.uk)    **Web:** [www.dykesend.co.uk](http://www.dykesend.co.uk)

# Madmix



We are your local supplier of Minimix ready mixed concrete.

Any quantity supplied from 1 cubic metre upwards, small trucks for easy access, same day delivery including Saturdays. Supplied from our own new plant.

We supply to construction, building trade, DIY – anyone who needs concrete at a competitive, fast, reliable service call **Madmix**.

Credit Cards, Cash, Cheques and Accounts accepted.

Support your local business

**Madmix**

From Madingley Mulch

---

## MADINGLEY MULCH

**Your Gardens Friend**

*\*BARKS\*SOILS\*COMPOSTS\*MULCHES\*CONDITIONERS\**

All delivered in our big 1 metre bag to your door or can be delivered loose in loads of 1 – 50 metres.

*\*SOFT/SHARP SAND \* 10/20MM GRAVELS\*BALLAST\*  
\*COBBLES \*LIMESTONE\**

Can be collected from our yard over weighbridge or delivered loose on our transport or in 1/2 metre bags.

MADINGLEY MULCH  
MADINGLEY ROAD  
COTON  
CAMBS  
CB23 7PH

TEL: 01954 212144  
FAX: 01954 210358  
[www.mulch.co.uk](http://www.mulch.co.uk)  
[kay@mulch.co.uk](mailto:kay@mulch.co.uk)

OPEN 7 DAYS A WEEK

# Our customers say that it's a brilliant concept

Capability Barns at Fen Drayton houses a brilliant venue where gardeners and garden designers can see and experience our unique **display gardens**. See the immense range of natural hard landscaping products and you will understand why Bannold have gained such a matchless reputation. *Come and see for yourself.*

Opening times Mon to Fri 7.30am to 5pm. Sat 9am to 1pm

For our complimentary brochure, call  
free on 0500 012231



**Specialists in natural hard landscaping materials**

Bannold  
Capability Barns  
Huntingdon Road  
Fen Drayton  
Cambridge CB24 4SD

T: 01954 231666 F: 01954 231522

[www.bannold.co.uk](http://www.bannold.co.uk)

Email: [supplies@bannold.co.uk](mailto:supplies@bannold.co.uk)